

AUSTRALIAN PRODUCT INFORMATION

MINAX[®] XL

(metoprolol succinate) modified release tablet



1 NAME OF THE MEDICINE

Metoprolol succinate.

2 QUALITATIVE AND QUANTITATIVE COMPOSITION

Each MINAX XL modified release tablet contains 23.75 mg, 47.5 mg, 95 mg, 190 mg metoprolol succinate as the active ingredient.

Excipients with known effect: lactose

For the full list of excipients, see Section 6.1 LIST OF EXCIPIENTS.

3 PHARMACEUTICAL FORM

MINAX XL 23.75 : White to off-white, round shaped, biconvex film coated tablets debossed with tablets (23.75 mg) “M” on one side of break line on one side of the tablet and “MT1” on other side of the tablet.

MINAX XL 47.5 : White to off-white, oval shaped, biconvex film coated tablet debossed with “M” tablets (47.5 mg) on one side of break line on one side of the tablet and “MT2” on other side of the tablet.

MINAX XL 95 : White to off-white, oval shaped, biconvex film coated tablet debossed with “M” tablets (95 mg) on one side of break line on one side of the tablet and “MT3” on other side of the tablet.

MINAX XL 190 : White to off-white, oval shaped, biconvex film coated tablet debossed with “M” tablets (190 mg) on one side of break line on one side of the tablet and “MT4” on other side of the tablet.

4 CLINICAL PARTICULARS

4.1 THERAPEUTIC INDICATIONS

Stable, chronic heart failure as an adjunct to other heart failure therapy.

4.2 DOSE AND METHOD OF ADMINISTRATION

MINAX XL has not been established to be clinically equivalent to immediate release forms of metoprolol, and should not be used for treatment of conditions other than stable, chronic heart failure.

MINAX XL is recommended for once daily treatment and is preferably taken together with the morning meal. The tablets may be broken in half. MINAX XL tablets should be swallowed with liquid and should not be chewed or crushed.

The dose of MINAX XL should be individually adjusted in patients with chronic heart failure stabilised on other heart failure treatment.

It is recommended that patients be titrated from an initial low dose in accordance with the following titration schedule:

Titration schedule

MINAX XL	Treatment Regimen
Initial dose: MINAX XL 23.75	½ or 1 tablet daily for 2 weeks*
MINAX XL 47.5	1 tablet daily for 2 weeks
MINAX XL 95	1 tablet daily for 2 weeks
MINAX XL 190 or highest tolerated dose	Continued [#]
<p>*Patients with moderate to severe heart failure (NYHA III-IV): It is recommended that these patients start treatment with a half a MINAX XL23.75 tablet once daily for one week, then take a full MINAX XL 23.75 tablet once daily for the second week.</p> <p>[#]Maintenance dose: During long term treatment the aim should be to reach MINAX XL 190 once daily (or the highest tolerated dose).</p>	

The patient should be carefully evaluated at each dose level with regard to tolerability. If the patient experiences hypotension a decreased dose of concomitant heart failure medication may be necessary. Initial hypotension does not necessarily mean that the dose cannot be tolerated during chronic treatment but the patient should be kept at the lower dose until their blood pressure has stabilised.

Some patients may experience an initial, usually transient, worsening of the symptoms and signs of heart failure when starting treatment with MINAX XL. If this occurs, the patient should be monitored very closely and the dose of MINAX XL should be reduced if symptoms continue to worsen. MINAX XL should not be ceased abruptly due to the risk of rebound hypertension and tachycardia. If treatment is to be discontinued, it should be reduced gradually (see Section 4.4 SPECIAL WARNINGS AND PRECAUTIONS FOR USE).

Impaired renal and hepatic function

Dose adjustment is not needed in patients with impaired renal function.

Dose adjustment is normally not needed in patients suffering from liver cirrhosis because metoprolol is low protein binding (5-10%). When there are signs of serious impairment of liver function (e.g. patients who have had a shunt operation), a dose reduction should be considered.

Elderly

Dose adjustment is not needed in the elderly.

Children

There is limited experience with MINAX XL treatment in children.

4.3 CONTRAINDICATIONS

- Predisposition to bronchospasm

β-adrenergic blockade of the smooth muscle of bronchi and bronchioles may result in an increased airways resistance. These drugs also reduce the effectiveness of asthma treatment. This may be dangerous in susceptible patients.

Therefore, β-blockers are contraindicated in any patient with a history of airways obstruction or a tendency to bronchospasm. Use of cardioselective β-blockers can also result in severe bronchospasm. If such therapy must be used, great caution should be exercised. Alternative therapy should be considered.

- Allergic disorders (including allergic rhinitis) which may suggest a predisposition to bronchospasm

- Right ventricular failure secondary to pulmonary hypertension
- Significant right ventricular hypertrophy
- Second and third degree atrioventricular block
- Shock (including cardiogenic and hypovolaemic shock)
- Unstable decompensated congestive heart failure (pulmonary oedema, hypoperfusion or hypotension)
- Continuous or intermittent inotropic therapy acting through β -receptor agonism
- Clinically relevant sinus bradycardia (less than 45-50 beats/minute)
- Non-compensated congestive heart failure (see Section 4.4 SPECIAL WARNINGS AND PRECAUTIONS FOR USE)
- Sick-sinus syndrome (unless a permanent appropriately functioning pacemaker is in place)
- Severe peripheral arterial circulatory disorders
- Suspected acute myocardial infarction with a heart rate of < 45 beats/minute, a P-R interval of > 0.24 seconds or a systolic blood pressure of < 100 mmHg, and/or moderate to severe non-compensated heart failure
- Hypotension
- Untreated phaeochromocytoma (see Section 4.4 SPECIAL WARNINGS AND PRECAUTIONS FOR USE)
- Hypersensitivity to any component of MINAX XL and related derivatives. Cross-sensitivity between β -blockers can occur.

4.4 SPECIAL WARNINGS AND PRECAUTIONS FOR USE

Symptomatic cardiac failure

β -blockers should not be used in patients with unstabilised heart failure. This condition should first be stabilised with appropriate treatment (e.g. angiotensin-converting enzyme inhibitors, digoxin, diuretics). If cardiac failure persists, MINAX XL should be discontinued gradually (see Section 4.4 SPECIAL WARNINGS AND PRECAUTIONS FOR USE - Abrupt Withdrawal).

Bronchospasm

Where MINAX XL is prescribed for patients known to be suffering from asthma, an inhaled β_2 -agonist should be administered. The dosage of β_2 -agonists may require adjustment (increase), however the risk of modified release metoprolol succinate interfering with β_2 -receptors is less than with conventional tablet formulations of β_1 -selective blockers.

Concomitant therapy with calcium antagonists

The concomitant use of calcium antagonists with myocardial suppressant and sinus node activity (e.g. verapamil and to a lesser extent diltiazem) and β -blockers may cause bradycardia, hypotension and asystole. Extreme caution is required if these drugs have to be used together (see Section 4.5 INTERACTIONS WITH OTHER MEDICINES AND OTHER FORMS OF INTERACTIONS).

Anti-arrhythmic drugs

Care should be taken when prescribing β -blockers with antiarrhythmic drugs as they may enhance the negative inotropic and chronotropic effects (see Section 4.5 INTERACTIONS WITH OTHER MEDICINES AND OTHER FORMS OF INTERACTIONS).

Diabetes

MINAX XL should be used with caution in patients with diabetes mellitus, especially those who are receiving insulin or oral hypoglycaemic agents. Diabetic patients should be warned that β -blockers affect glucose metabolism and may mask some important premonitory signs of acute hypoglycaemia, such as tachycardia.

In patients with insulin or non-insulin dependent diabetes, especially labile diabetes, or with a history of spontaneous hypoglycaemia, β -blockade may result in the loss of diabetic control and delayed recovery from hypoglycaemia. The dose of insulin or oral hypoglycaemic agent may need to be adjusted. Diabetic patients receiving MINAX XL should be monitored to ensure diabetes control is maintained.

Other metabolic effects

Beta adrenoreceptors are involved in the regulation of lipid as well as carbohydrate metabolism. Some drugs affect the lipid profile adversely although the long-term clinical significance of this change is unknown and the effect appears to be less for drugs with intrinsic sympathomimetic activity.

Conduction disorders

Very rarely a pre-existing A-V conduction disorder of moderate degree may become aggravated (possibly leading to A-V block). MINAX XL should be administered with caution to patients with first degree A-V block (see Section 4.3 CONTRAINDICATIONS).

Peripheral vascular disease

β -blockade may impair the peripheral circulation and exacerbate the symptoms of peripheral vascular disease (see Section 4.3 CONTRAINDICATIONS).

Bradycardia

If patients develop increasing bradycardia, MINAX XL should be given in lower doses or gradually withdrawn.

Prinzmetal angina

There is a risk of exacerbating coronary artery spasm if patients with Prinzmetal or variant angina are treated with a β -blocker. If this treatment is essential, it should only be undertaken in a Coronary or Intensive Care Unit.

Effects on the thyroid

The effects of β -blockers on thyroid hormone metabolism may result in elevations of serum free thyroxine (T_4) levels. In the absence of any signs or symptoms of hyperthyroidism, additional investigation is necessary before a diagnosis of thyrotoxicosis can be made.

Phaeochromocytoma

Where MINAX XL is prescribed for a patient known to be suffering from phaeochromocytoma, an α -blocker should be given concomitantly to avoid exacerbation of hypertension.

Effects on the eye and skin

Various skin rashes and conjunctival xerosis have been reported with β -blocking agents. Cross-reactions may occur between β -blockers, therefore substitutions within the group may not necessarily preclude occurrence of symptoms.

During long-term treatment with the β -blocking drug practolol a specific rash bearing a serficial resemblance to psoriasis was occasionally described. In a number of the patients affected, this rash was accompanied by adverse effects on the eye (xerophthalmia and/or keratoconjunctivitis) of varying severity. This condition is called the oculomuocutaneous or practolol syndrome. On a few rare occasions, serious otitis media, sclerosing peritonitis and pleurisy have been reported as part of this syndrome.

The oculomuocutaneous syndrome as reported with practolol has not been reported with metoprolol. However, dry eyes and skin rash have been reported with metoprolol. If such symptoms occur, discontinuation of metoprolol should be considered.

Recently, an association between Peyronie's disease (a fibrosing induration of the penis) and various β -blockers has been suggested but is not proven.

General anaesthesia

Prior to surgery the anaesthetist should be informed that the patient is receiving MINAX XL because of the potential for interactions with other drugs, resulting in severe bradyarrhythmias and hypotension, decreased reflex ability to compensate for blood loss, hypovolaemia and regional sympathetic blockade, and decreased propensity for vagal-induced bradycardia (see Section 4.5 INTERACTIONS WITH OTHER MEDICINES AND OTHER FORMS OF INTERACTIONS). It is not recommended to stop β -blocker treatment in patients undergoing surgery. Acute initiation of high-dose metoprolol to patients undergoing non-cardiac surgery should be avoided, since it has been associated with bradycardia, hypotension and stroke including fatal outcome in patients with cardiovascular risk factors.

If it is thought necessary to withdraw β -blocker therapy before surgery, this should be done gradually and completed about 48 hours before surgery (see Section 4.4 SPECIAL WARNINGS AND PRECAUTIONS FOR USE - Abrupt Withdrawal).

Abrupt withdrawal

Abrupt withdrawal of β -blockade is hazardous, especially in high risk patients, and should not be done. If there is a need to discontinue treatment with MINAX XL, this should be done gradually over at least two weeks with the dose reduced by half in each step, down to a final dose of half a 23.75 mg tablet. The final dose should be taken for at least four days before discontinuation. Close observation of the patient is required during the withdrawal phase. If symptoms occur, a slower withdrawal rate is recommended. Sudden withdrawal of β -blockade may aggravate chronic heart failure and also increase the risk of myocardial infarction and sudden death.

Allergic conditions

Allergic reactions may be exaggerated by β -blockade (e.g. allergic rhinitis during the pollen season and allergic reactions to bee and wasp stings). β -blockers should be avoided if there is a risk of bronchospasm.

In patients taking β -blockers, anaphylactic shock assumes a more severe form and may be resistant to usual doses of adrenaline (epinephrine). Whenever possible, β -blockers should be avoided in patients who are at increased risk of anaphylaxis.

Hyperthyroidism

Because β -blockers may mask the clinical signs of developing or continuing hyperthyroidism resulting in symptomatic improvement without any change in thyroid status, special care should be exercised in hyperthyroid patients who are also receiving β -blockers. Where MINAX XL is administered to patients having, or suspected of developing thyrotoxicosis, both thyroid and cardiac function should be closely monitored.

Effects on the heart rate

If the patient develops increasing bradycardia (heart rate less than 50 to 55 beats/minute), the dosage of MINAX XL should be gradually reduced or treatment gradually withdrawn (see Section 4.3 CONTRAINDICATIONS).

Use in Hepatic Impairment

Metoprolol is mainly eliminated by hepatic metabolism (see Section 5.2 PHARMACOKINETIC PROPERTIES). Therefore, liver cirrhosis may increase the systemic bioavailability of metoprolol and reduce its total clearance, leading to increased plasma levels.

Use in Renal Impairment

In patients with severe renal disease haemodynamic changes following β -blockade may impair renal function further. β -blockers which are excreted mainly by the kidney may require dose adjustment in patients with renal failure.

Use in the Elderly

See Section 4.2 DOSE AND METHOD OF ADMINISTRATION and 5.2 PHARMACOKINETIC PROPERTIES.

Paediatric Use

The safety and efficacy of metoprolol in children has not been established.

Effects on Laboratory Tests

No data available.

4.5 INTERACTIONS WITH OTHER MEDICINES AND OTHER FORMS OF INTERACTIONS

CYP2D6 Inhibitors

Coadministration of drugs which inhibit CYP2D6 such as quinidine, fluoxetine and paroxetine may cause increased exposure to metoprolol and consequent increased pharmacological effects.

Concomitant administration of the CYP2D6 inhibitor quinidine has been shown to substantially increase systemic exposure of both enantiomers of metoprolol. In healthy subjects with CYP2D6 extensive metaboliser phenotype, coadministration of quinidine 100 mg and immediate release metoprolol 200 mg tripled the concentration of S-metoprolol and doubled the metoprolol elimination half-life. These increases in plasma concentration are highly likely to be associated with exaggerated pharmacological effects and decrease in the cardioselectivity of metoprolol. Interactions with hydroxychloroquine and diphenhydramine, although smaller, could still be clinically significant.

Other anti-hypertensive agents

Metoprolol enhances the effects of other antihypertensive drugs. Particular care is required when initiating administration of a β -blocker and prazosin together.

Sympathetic ganglion blocking agents, other β -blockers or monoamine oxidase (MAO) inhibitors

Patients receiving concomitant treatment with sympathetic ganglion blocking agents, other β -blockers (including eye drops), or monoamine oxidase (MAO) inhibitors should be kept under close surveillance.

Clonidine

Concurrent use of β -blockers and clonidine should be avoided because of the risk of adverse interaction and severe withdrawal symptoms.

If concomitant treatment with clonidine is to be discontinued, the β -blocker medication should be withdrawn several days before the gradual withdrawal of clonidine. The rebound hypertension associated with clonidine withdrawal can be exacerbated by the presence of a β -blocker. If both drugs are withdrawn simultaneously, a marked rise in blood pressure and/or arrhythmias may result.

If replacing clonidine by β -blocker therapy, the introduction of β -blockers should be delayed for several days after clonidine administration has stopped.

Calcium antagonists

If MINAX XL is given with calcium antagonists of the verapamil and diltiazem type the patient should be monitored for possible negative inotropic and chronotropic effects. Calcium antagonists of the phenylalkylamine type (e.g. verapamil) should not be given by intravenous administration to patients treated with metoprolol because there is a risk of cardiac arrest in this situation. Patients taking oral calcium antagonists of this type in combination with metoprolol should be closely monitored.

The combination of β -blockers with dihydropyridine calcium channel blockers with a weak myocardial depressant effect (e.g. felodipine, nifedipine) can be administered together with caution. In case excess hypotension develops, the calcium antagonist should be stopped or the dosage reduced.

Antiarrhythmic agents

When metoprolol is given together with antiarrhythmic agents, the patients should be monitored for possible negative inotropic and chronotropic effects. The negative inotropic and negative chronotropic effects of antiarrhythmic agents of the quinidine type and amiodarone may be enhanced by β -blockers. Interactions have been reported during concomitant β -blocker therapy with the Class IA agents disopyramide, and less frequently quinidine; class IB agents, tocainide, mexiletine and lidocaine (lignocaine); the Class IC agent flecainide; the Class III agent amiodarone; and the Class IV antiarrhythmic agents (e.g. verapamil).

Anaesthetics

In patients receiving β -blocker therapy, inhalation anaesthetics enhance the cardiodepressant effect (see Section 4.4 SPECIAL WARNINGS AND PRECAUTIONS FOR USE). Metoprolol may also reduce the clearance of other drugs (e.g. lidocaine (lignocaine)).

Modern inhalational anaesthetic agents are generally well tolerated, although older agents (ether, cyclopropane, methoxyflurane, trichlorethylene) were sometimes associated with severe circulatory depression in the presence of β -blockage.

Liver enzyme effects

Enzyme-inducing and enzyme-inhibiting substances may exert an influence on the plasma level of metoprolol. The plasma concentration of metoprolol is lowered by rifampicin and may be raised by cimetidine, alcohol, hydralazine, and selective serotonin re-uptake inhibitors (SSRIs) e.g. paroxetine, fluoxetine, and sertraline, quinidine, verapamil and diphenhydramine.

Prostaglandin synthetase inhibiting agents

Concomitant treatment with indometacin or other prostaglandin synthetase inhibiting agents may decrease the antihypertensive effect of β -blockers.

Alcohol

Metoprolol may modify the pharmacokinetic behaviour of alcohol when taken together. The plasma level of metoprolol may be raised by alcohol.

Oral antidiabetic agents

The dosages of oral antidiabetics may need to be adjusted in patients receiving β -blockers (see Section 4.4 SPECIAL WARNINGS AND PRECAUTIONS FOR USE).

Warfarin

A limited number of reports have demonstrated a rise in AUC and concentration of warfarin when taken with another β -blocker. This could potentially increase the anti-coagulant effect of warfarin.

Catecholamine-depleting agents

Concomitant use of catecholamine-depleting drugs such as reserpine, monoamine oxidase (MAO) inhibitors and guanethidine have an additive effect when given with β -blocking agents. Patients treated with MINAX XL plus a catecholamine depletor should therefore be closely observed for evidence of hypotension or marked bradycardia, which may produce vertigo, syncope, or postural hypotension, since the added effect of a β -blocker may produce an excessive reduction of the resting sympathetic nervous tone.

Digitalis glycosides

Digitalis glycosides, in association with β -blockers, may increase atrioventricular conduction time and may induce bradycardia.

4.6 FERTILITY, PREGNANCY AND LACTATION

Effects on Fertility

In rats dosed with 500 mg/kg/day (23 times the MRCD on a mg/m² basis), there was a slight decrease in insemination rate (75% cf. 95% in untreated controls) with signs of maternal toxicity. There was no evidence of impaired fertility at 50 mg/kg/day (2.3 times the MRCD).

Use in Pregnancy

Pregnancy Category: C

As with most drugs, MINAX XL should not be given during pregnancy unless its use is considered essential. As with all antihypertensive agents, β -blockers may cause side effects (e.g. reduced placental perfusion and bradycardia) in the foetus and newborn. Reduced placental perfusion has been associated with growth retardation, intrauterine death, abortion and early labour. It is therefore suggested that appropriate maternofaetal monitoring be performed in pregnant women treated with MINAX XL. During the late stages of pregnancy these drugs should only be given after weighing the needs of the mother against the risk to the foetus.

The lowest possible dose should be used and discontinuation of treatment should be considered at least 2 to 3 days before delivery to avoid increased uterine contractility and effects of β -blockade in the newborn (e.g. bradycardia, hypoglycaemia).

Metoprolol tartrate was shown to increase foetal loss in rabbits at 25 mg/kg/day PO (2 times the MRCD on a mg/m² basis), and increase still births and decrease neonatal survival in rats at 500 mg/kg/day PO (23 times the MRCD on a mg/m² basis). These studies revealed no evidence of teratogenicity.

Use in Lactation

As with most drugs, MINAX XL should not be given during lactation unless its use is considered essential. As with all antihypertensive agents, β -blockers may cause side effects (e.g. bradycardia) in the breast-fed infant. The amount of metoprolol ingested via breast-milk seems to be negligible, in regard to β -blocking effect in the infant, if the mother is treated with metoprolol in doses within the normal therapeutic range.

Postnatal growth was not affected in lactating rats dosed with metoprolol tartrate at up to 500 mg/kg/day PO (23 times the MRCD on a mg/m² basis).

4.7 EFFECTS ON ABILITY TO DRIVE AND USE MACHINES

MINAX XL may occasionally cause dizziness, visual disturbances or fatigue (see Section 4.8 ADVERSE EFFECTS (Undesirable effects)), hence patients should know how they react to MINAX XL before they drive or use machinery, particularly when starting or changing treatment.

4.8 ADVERSE EFFECTS (UNDESIRABLE EFFECTS)

MINAX XL is well tolerated and adverse reactions have generally been mild and reversible. The following events have been reported as adverse events in clinical trials or reported from routine use, mostly with conventional metoprolol (metoprolol tartrate). In many cases a relationship with metoprolol has not been established.

The following definitions of frequency are used: very common $\geq 10\%$; common 1-9.9%; uncommon 0.1-0.9%; rare 0.01-0.09%; very rare $< 0.01\%$.

Cardiovascular

Common: Bradycardia, postural disorders (very rarely with syncope), cold hands and feet (Raynaud's phenomenon), palpitations.

Uncommon: Transient deterioration of heart failure symptoms, A-V block I, oedema, precordial pain, cardiogenic shock in patients with acute myocardial infarction*.

Rare: Disturbances of cardiac conduction, cardiac arrhythmias.

Very rare: Gangrene in patients with pre-existing severe peripheral circulatory disorders.

*Excess frequency of 0.4% compared with placebo in a study of 46000 patients with acute myocardial infarction where the frequency of cardiogenic shock was 2.3% in the metoprolol group and 1.9% in the placebo group in the subset of patients with low shock risk index. The shock risk index was based on the absolute risk of shock in each individual patient derived from age, sex, time delay, Killip class, blood pressure, heart rate, ECG abnormality, and prior history of hypertension. The patient group with low shock risk index corresponds to the patients in which metoprolol is recommended for use in acute myocardial infarction.

Central nervous system

Very common: Fatigue.

Common: Dizziness, headache.

Uncommon: Paraesthesia, muscle cramps.

Gastrointestinal

Common: Nausea, diarrhoea, constipation, abdominal pain.

Uncommon: Vomiting.

Rare: Dry mouth.

Haematologic

Very rare: Thrombocytopenia.

Hepatic

Rare: Liver function test abnormalities.

Very Rare: Hepatitis.

Metabolic

Uncommon: Weight gain.

Psychiatric

Uncommon: Depression, impaired concentration, somnolence or insomnia, nightmares.

Rare: Nervousness, anxiety, impotence/sexual dysfunction.

Very rare: Amnesia/memory impairment, confusion, hallucinations.

Respiratory

Common: Dyspnoea on exertion.

Uncommon: Bronchospasm (which may also occur in patients without a history of obstructive lung disease).

Rare: Rhinitis.

Sense organs

Rare: Disturbances of vision, dry and/or irritated eyes, conjunctivitis.

Very rare: Tinnitus, taste disturbances.

Skin

Uncommon: Rash (in the form of urticaria, psoriasiform and dystrophic skin lesions) increased sweating.

Rare: Loss of hair.

Very rare: Photosensitivity reactions, aggravated psoriasis.

Miscellaneous

Very rare: Arthralgia.

Reporting Suspected Adverse Effects

Reporting suspected adverse reactions after registration of the medicinal product is important. It allows continued monitoring of the benefit-risk balance of the medicinal product. Healthcare professionals are asked to report any suspected adverse reactions at www.tga.gov.au/reporting-problems.

4.9 OVERDOSE**Symptoms**

Symptoms of overdosage may include severe hypotension, cardiac insufficiency, bradycardia and bradyarrhythmia, cardiac conduction disturbances, cardiogenic shock, cardiac arrest, impairment of consciousness/coma, convulsions and bronchospasm. The main clinical signs of overdosage are cardiovascular and in some cases decompensation may be rapid. Overdosage with MINAX XL can lead to death.

Cases of overdosage in paediatric patients need to be given extra attention even if the patient appears well on presentation and even if only a small number of tablets have apparently been taken.

Management

Care should be provided at a facility that can provide appropriate supporting measures, monitoring, and supervision.

Activated charcoal may reduce absorption of the medicine if given within one or two hours after ingestion. In patients who are not fully conscious or have impaired gag reflex, consideration should be given to administering activated charcoal via a nasogastric tube, once the airway is protected.

Syrup of ipecac and gastric lavage are no longer considered to be standard therapy for gut decontamination.

Atropine, adreno stimulating drugs or pacemaker to treat bradycardia and conduction disorders.

Hypotension, acute cardiac failure, and shock to be treated with suitable volume expansion, injection of glucagon (if necessary, followed by an intravenous infusion of glucagon), intravenous administration of adreno stimulating drugs such as dobutamine, with α_1 receptor agonistic drugs added in presence of vasodilation. Intravenous use of calcium salts (Ca^{2+}) can also be considered.

Bronchospasm can usually be reversed by bronchodilators.

For information on the management of overdose, contact the Poisons Information Centre on 13 11 26 (Australia).

5 PHARMACOLOGICAL PROPERTIES

5.1 PHARMACODYNAMIC PROPERTIES

Mechanism of Action

Metoprolol is a β_1 -selective β -blocker, i.e. it blocks β_1 -receptors at doses lower than those needed to block β_2 -receptors.

Metoprolol is practically devoid of membrane stabilising activity and does not display partial agonist activity (i.e. intrinsic sympathomimetic activity = ISA) at doses required to produce β -blockade. The stimulant effect of catecholamines on the heart is reduced or inhibited by metoprolol. This leads to a decrease in heart rate, cardiac output, cardiac contractility and blood pressure.

Modified release metoprolol succinate and the immediate release metoprolol tartrate are not bioequivalent. Modified release metoprolol succinate gives an even plasma concentration time profile and effect (β_1 -blockade) over 24 hours in contrast to conventional tablet formulations of β_1 -selective blockers including metoprolol tartrate formulations.

When given together with a β_2 -agonist, metoprolol succinate in therapeutic doses interferes less than non-selective β -blockers with β_2 -mediated bronchodilation (see Section 4.4 SPECIAL WARNINGS AND PRECAUTIONS FOR USE). When clinically necessary, metoprolol succinate, in combination with a β_2 -agonist, may be given to patients with symptoms of obstructive pulmonary disease. Metoprolol succinate also interferes less with insulin release than non-selective β -blockers.

Clinical Trials

Three randomised, double-blind, placebo-controlled studies and one randomised, open crossover study had been conducted to establish the efficacy and safety of modified release metoprolol succinate in patients with chronic heart failure.

The pivotal study, MERIT-HF (n=3991), was a survival study in patients with NYHA (New York Heart Association) functional class II-IV and decreased ejection fraction (≤ 0.40) on optimal standard therapy at enrolment. Patients were randomised to receive either modified release metoprolol succinate (n=1990) or

placebo (n=2001) once daily. The dose of modified release metoprolol succinate was titrated during 6-8 weeks to the target of 200 mg. Treatment ranged from 0 to 622 days with a mean duration of one year.

Participants were predominantly male (76%), Caucasian (94%), previous (55%) or current (19%) smokers, aged 60-79 years (66%; mean age 64), with heart failure secondary to ischaemia (65%). Most had mild to moderate symptomatic heart failure at baseline: 41% in NYHA Class II, 56% in Class III and 4% in Class IV. The mean ejection fraction was 0.28. About half the patients had a history of hypertension (44%) and/or myocardial infarction (48%). 25% had a history of diabetes mellitus. 10-20% had peripheral oedema, jugular venous distension, pulmonary rales and/or hepatomegaly. 23% had a third heart sound, 34% had a heart murmur, 25% had an irregular heart beat and 16% were in atrial fibrillation. 90% of patients were on one or more diuretics, 89% on an angiotensin converting enzyme inhibitor, 7% on an angiotensin II-blocker, 63% on digitalis, 36% on long-acting nitrates, 54% on aspirin, 37% on an oral anticoagulant and 23% on a statin.

The following table summarises the results of the efficacy variables for modified release metoprolol succinate compared to placebo:

Endpoint	Event rate per 100 patient-years		Relative Risk Reduction [95% Confidence Interval]	p-value
	Modified release metoprolol succinate N=1990	Placebo N=2001		
All-cause mortality	7.2	11.0	34% (19%; 47%)	0.0062*
All-cause mortality and all-cause hospitalisation [#]	31.9	38.7	19% (10%; 27%)	0.0001
All-cause mortality and hospitalisation due to worsening of heart failure [#]	15.5	22.2	31% (20%; 40%)	< 0.0001
Death and heart transplant [#]	7.5	11.0	32% (16%; 45%)	0.0002
Cardiovascular mortality	6.4	10.3	38% (22%; 50%)	< 0.0001
Sudden Death	1.5	2.9	41% (22%; 55%)	0.0002
Death from worsening heart failure	3.9	6.7	49% (21%; 67%)	0.0023
Cardiac death and non-fatal acute myocardial infarction [#]	6.9	11.4	39% (25%; 51%)	< 0.0001
All-cause mortality, hospitalisation due to worsening heart failure and emergency room visit due to worsening heart failure [#]	15.8	23.0	32% (21%; 41%)	< 0.0001

*Adjusted for interim analyses. Unadjusted p-value = 0.0001

[#]Time to first event

The numbers needed to treat (NNT) to achieve a reduction of 1 case of all cause mortality, cardiac death and non-fatal AMI, mortality from cardiovascular causes and from sudden death are as follows:

Endpoint	NNT (one year)
All cause mortality	27
Cardiac death & Non-fatal acute MI	24
Mortality from CV causes	26
Mortality from Sudden death	37

Modified release metoprolol succinate was generally well tolerated. Treatment was ceased due to adverse events in 10.3% of patients taking modified release metoprolol succinate compared to 12.3% of those taking placebo. Compared to placebo, the overall rate of treatment withdrawal and withdrawal due to worsening heart failure tended to be less with modified release metoprolol succinate, but the difference did not reach statistical significance.

5.2 PHARMACOKINETIC PROPERTIES

Absorption

After rapid disintegration within the gastrointestinal tract, metoprolol is continuously released for approximately 20 hours, and a stable metoprolol plasma concentration is achieved over a dosage interval of 24 hours.

Distribution

Approximately 12% of metoprolol is bound to human serum proteins.

Metabolism

Metoprolol undergoes oxidative metabolism in the liver, primarily by CYP2D6. Due to polymorphism of CYP2D6, about 5-10% of Caucasians and a lower percentage of Asian and African populations are poor metabolisers of metoprolol. Such people experience higher plasma concentrations of metoprolol for a given dose. Because of these differences between individuals, gradual dose titration is important. Co-administration of drugs which inhibit CYP2D6 may increase plasma concentrations of metoprolol, particularly in extensive metabolisers (the majority of the population). Three main metabolites have been identified, although none have a beta-blocking effect of clinical importance.

Excretion

Over 95% of an oral dose can be recovered in the urine. Only approximately 5% of the administered dose is excreted unchanged, with this figure rising to 30% in isolated cases.

Pharmacokinetics in the elderly

The elderly shows no significant differences in the pharmacokinetics of metoprolol as compared with younger persons.

5.3 PRECLINICAL SAFETY DATA

Genotoxicity

Metoprolol tartrate was not mutagenic in a bacterial assay, nor did it induce chromosomal damage in Chinese hamsters (bone marrow micronucleus and chromosome aberration assays) or in mice (dominant lethal assay).

Carcinogenicity

Long-term studies in animals have been conducted to evaluate the carcinogenic potential of metoprolol tartrate. In rats at dietary doses of up to 800 mg/kg/day (36 times the maximum recommended clinical dose (MRCD) on a mg/m² basis) for 18 months, there was no increase in the incidence of neoplasms. The only

histologic changes that appeared to be drug related were an increased incidence of focal accumulation of foamy macrophages in pulmonary alveoli and an increased incidence of biliary hyperplasia.

In a 21-month study in CD-1 mice at dietary doses of up to 750 mg/kg/day (17 times the MRCD on a mg/m² basis), benign lung tumours (small adenomas) occurred more frequently in female mice receiving the highest dose than in untreated control animals. There was no increase in malignant or total (benign plus malignant) lung tumours, nor in the overall incidence of tumours.

6 PHARMACEUTICAL PARTICULARS

6.1 LIST OF EXCIPIENTS

microcrystalline cellulose, ethylcellulose, macrogol 400, hypromellose, colloidal anhydrous silica, macrogol 6000, sodium stearyl fumarate, OPADRY II complete film coating system 32K58990 WHITE (ARTG PI No: 108533).

6.2 INCOMPATIBILITIES

Incompatibilities were either not assessed or not identified as part of the registration of this medicine.

6.3 SHELF LIFE

In Australia, information on the shelf life can be found on the public summary of the Australian Register of Therapeutic Goods (ARTG). The expiry date can be found on the packaging.

6.4 SPECIAL PRECAUTIONS FOR STORAGE

Store below 25°C.

6.5 NATURE AND CONTENTS OF CONTAINER

Container type (all strengths): PA/Al/PVC/Al or PVC/PCTFE (Aclar)/Al

MINAX XL 23.75 : Available in blister packs of 15 and 30 tablets.
tablets (23.75 mg)

MINAX XL 47.5 : Available in blister packs of 30 tablets.
tablets (47.5 mg)

MINAX XL 95 : Available in blister packs of 30 tablets.
tablets (95 mg)

MINAX XL 190 : Available in blister packs of 30 tablets.
tablets (190 mg)

Some strengths, pack sizes and/or pack types may not be marketed.

Australian Register of Therapeutic Goods (ARTG)

AUST R 205151 - MINAX XL metoprolol succinate 23.75 mg modified release tablet blister pack

AUST R 205149 - MINAX XL metoprolol succinate 47.5 mg modified release tablet blister pack

AUST R 205148 - MINAX XL metoprolol succinate 95 mg modified release tablet blister pack

AUST R 205150 - MINAX XL metoprolol succinate 190 mg modified release tablet blister pack

6.6 SPECIAL PRECAUTIONS FOR DISPOSAL

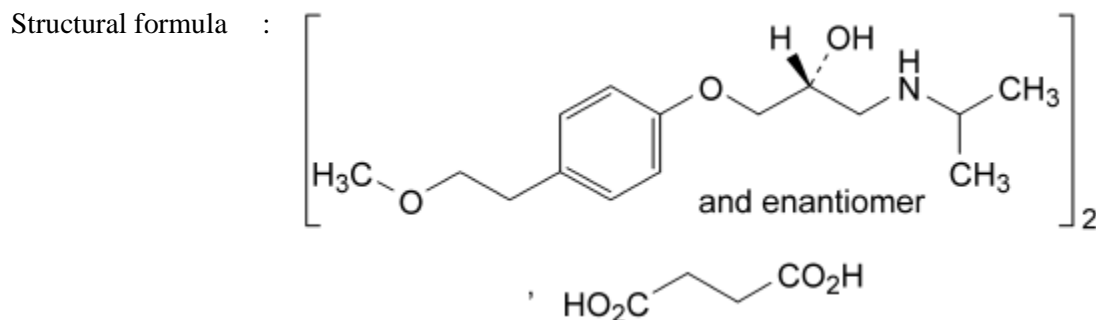
In Australia, any unused medicine or waste material should be disposed of by taking it to your local pharmacy.

6.7 PHYSICOCHEMICAL PROPERTIES

Metoprolol succinate is a white, crystalline powder with a melting point of approximately 138°C. It is freely soluble in water, soluble in methanol, slightly soluble in alcohol, and very slightly soluble in ethyl acetate.

Chemical Structure

Chemical name : Bis[(2RS)-1-[4-(2-methoxyethyl)phenoxy]-3-[(1-methylethyl)amino]propan-2-ol] butanedioate



Molecular formula : C₃₄H₅₆N₂O₁₀

Molecular weight : 653

CAS Number

98418-47-4

7 MEDICINE SCHEDULE (POISONS STANDARD)

S4 (Prescription Only Medicine)

8 SPONSOR

Alphapharm Pty Ltd trading as Viatris

Level 1, 30 The Bond

30-34 Hickson Road

Millers Point NSW 2000

www.viatris.com.au

Phone: 1800 274 276

9 DATE OF FIRST APPROVAL

09/04/2014

10 DATE OF REVISION

29/09/2023

Summary Table of Changes

Section Changed	Summary of New Information
All	Minor editorial changes
6.1	Update to list of excipients in line with ARTG

6.5	Updated details to reflect ARTG details and included product AUST R numbers
8	Update to Sponsor details

MINAX® is a Viatrix company trade mark

MINAX XL_pi\Sep23/01