

AUSTRALIAN PRODUCT INFORMATION

IPTAM[®] MIGRAINE RELIEF

Sumatriptan 50 mg (as succinate) film-coated tablets



1 NAME OF THE MEDICINE

Sumatriptan succinate

2 QUALITATIVE AND QUANTITATIVE COMPOSITION

Each IPTAM MIGRAINE RELIEF tablet contains the active ingredient sumatriptan succinate, 70mg equivalent to 50 mg of sumatriptan.

Excipients with known effect: sugars as lactose monohydrate.

For the full list of excipients, see Section 6.1 LIST OF EXCIPIENTS.

3 PHARMACEUTICAL FORM

Pink, round, film-coated tablet with 'G' on one side and 'SU50' on the other side. Available in packs containing 2 tablets in foil blisters.

4 CLINICAL PARTICULARS

4.1 THERAPEUTIC INDICATIONS

IPTAM MIGRAINE RELIEF tablets are indicated for the acute relief of migraine in patients who have a stable, well-established pattern of symptoms.

There is no information available on the use of IPTAM MIGRAINE RELIEF in the treatment of basilar or hemiplegic migraine.

4.2 DOSE AND METHOD OF ADMINISTRATION

IPTAM MIGRAINE RELIEF is indicated for the acute intermittent relief of migraine. It should not be used prophylactically.

Ergotamine or ergotamine derivatives and IPTAM MIGRAINE RELIEF should not be administered concurrently (see section 4.3 CONTRAINDICATIONS and section 4.5 INTERACTIONS WITH OTHER MEDICINES AND OTHER FORMS OF INTERACTIONS).

Migraine

It is recommended to start the treatment at the first sign of a migraine headache or associated symptoms such as nausea, vomiting or photophobia. The efficacy of sumatriptan is independent of the duration of the attack when starting treatment. Administration during a migraine aura prior to other symptoms occurring may not prevent the development of a headache.

The initial recommended dose for adults aged 18 to 65 years of oral IPTAM MIGRAINE RELIEF is 50 mg. If symptoms recur, a further dose may be given, provided that there is a minimum interval of two hours between the doses. No more than 100 mg should be taken in any 24-hour period without the advice of a medical practitioner. The tablet should be swallowed whole with water.

If a patient does not respond to the first dose of IPTAM MIGRAINE RELIEF, a second dose should not be taken for the same attack. IPTAM MIGRAINE RELIEF may be used for subsequent attacks.

4.3 CONTRAINDICATIONS

IPTAM MIGRAINE RELIEF should not be used in patients who have:

- Hypersensitivity to any component of the preparation (see section 6.1 LIST OF EXCIPIENTS).
- A history of myocardial infarction.
- Peripheral vascular disease or symptoms or signs consistent with ischaemic heart disease.
- Prinzmetal's angina/coronary vasospasm.
- Uncontrolled hypertension.
- Cerebrovascular accident or transient ischaemic attack.
- Severe hepatic impairment.

IPTAM MIGRAINE RELIEF should not be used within 24 hours of treatment with an ergotamine-containing or ergot-type medication such as dihydroergotamine or methysergide.

IPTAM MIGRAINE RELIEF should not be given to patients receiving monoamine oxidase inhibitors (MAOIs) or within two weeks of discontinuation of MAOI therapy.

IPTAM MIGRAINE RELIEF should not be administered to patients with hemiplegic, basilar or ophthalmoplegic migraine.

4.4 SPECIAL WARNINGS AND PRECAUTIONS FOR USE

General

IPTAM MIGRAINE RELIEF should only be used where there is a clear diagnosis of migraine made by a doctor. For pharmacy supply, patients should have an established pattern of migraine (a history of five or more migraine attacks occurring over a period of at least 1 year). Sumatriptan tablets should not be taken concomitantly with other migraine therapies containing any triptan, ergotamine or derivatives of ergotamine (see section 4.3 CONTRAINDICATIONS).

If a patient does not respond to the first dose, the opportunity should be taken to review the diagnosis before a second dose is given. The recommended doses of IPTAM MIGRAINE RELIEF should not be exceeded.

Patients with migraine that persist for longer than 24 hours should seek advice from a doctor.

Patients in whom the pattern of symptoms has changed, or whose attacks have become more frequent, more persistent, or more severe, or who do not recover completely between attacks, should seek advice from their doctor.

Patients with atypical symptoms which include, but are not limited to, unilateral motor weakness, double vision, clumsy and uncoordinated movements, tinnitus, reduced level of consciousness, seizure-like movements, or recent onset of rash with headache should seek advice from their doctor.

Patients whose migraine symptoms appear for the first time after age 50 should seek advice from their doctor as there may be a more serious underlying cause.

Patients who experience four or more migraine attacks per month should be referred to a doctor for ongoing management.

Women with migraine who are taking the combined oral contraceptive pill have an increased risk of stroke and should seek medical advice from their doctor if migraine attacks started recently (within the last 3 months), migraine symptoms have worsened or they have migraine with aura.

Patients with rare hereditary problems of galactose intolerance, the Lapp lactase deficiency or glucose-galactose malabsorption should not take this medicine.

Drowsiness may occur as a result of migraine or its treatment with IPTAM MIGRAINE RELIEF. Caution is recommended in patients performing skilled tasks, e.g. driving or operating machinery.

IPTAM MIGRAINE RELIEF should also be administered with caution to patients with diseases, which may affect significantly the metabolism, absorption and excretion of the drug, such as impaired hepatic or renal function. Studies have shown reduced sumatriptan clearance in patients with hepatic impairment. Lower doses should be considered in these patients. If appropriate, the first dose should be given under supervision to these patients.

Patients with known hypersensitivity to sulphonamides may exhibit an allergic reaction following administration of IPTAM MIGRAINE RELIEF. Reactions may range from cutaneous hypersensitivity to anaphylaxis. Evidence of cross sensitivity is limited however, caution should be exercised before using IPTAM MIGRAINE RELIEF in these patients.

Overuse of acute migraine treatments has been associated with the exacerbation of headache (medication overuse headache, MOH) in susceptible patients. Withdrawal of the treatment may be necessary.

Co-administration of IPTAM MIGRAINE RELIEF within 24 hours of other 5-HT₁ agonists is not recommended due to the potential for vasoconstrictive effects.

Cardiovascular

It is strongly recommended that sumatriptan not be given to patients in whom risk factors indicate a possibility of unrecognised coronary artery disease (CAD) unless a cardiovascular evaluation provides satisfactory clinical evidence that the patient is reasonably free of coronary artery and ischaemic myocardial disease or other significant underlying cardiovascular disease. The risk factors include hypertension, hypercholesterolaemia, smoker, obesity, diabetes, strong family history of CAD, female with surgical or physiological menopause, or male over 40 years of age.

The sensitivity of cardiac diagnostic procedures to detect cardiovascular disease or predisposition to coronary artery vasospasm is modest, at best and, in extremely rare cases (less than 1 in 10,000), serious cardiac events have occurred in patients without underlying cardiovascular disease. If during the cardiovascular evaluation, the patient's medical history of electrocardiographic investigations reveal findings indicative of, or consistent with coronary artery vasospasm or myocardial ischaemia, sumatriptan should not be administered (see section 4.3 CONTRAINDICATIONS).

IPTAM MIGRAINE RELIEF may cause short-lived elevation of blood pressure and peripheral vascular resistance. Sumatriptan should therefore be administered with caution to patients with controlled hypertension. Transient increases in blood pressure and peripheral vascular resistance have been observed in a small proportion of patients.

Serious cardiac events, including some that have been fatal, have occurred within a few hours following the use of IPTAM MIGRAINE RELIEF tablets. These events are extremely rare (less than 1 in 10,000) and the majority of these case reports were confounded by patients having pre-existing heart disease or risk factors for ischaemic heart disease and may reflect underlying disease and spontaneous events. Under these circumstances the specific contribution of IPTAM MIGRAINE RELIEF cannot be determined. Events reported have included coronary artery vasospasm, transient myocardial ischaemia, myocardial infarction, and cardiac arrhythmias including ventricular tachycardia and ventricular fibrillation. Therefore IPTAM MIGRAINE RELIEF should not be given to patients in whom unrecognised cardiac disease is likely without a prior evaluation for underlying cardiovascular disease. Such patients include postmenopausal women, males over 40 and patients with risk factors for coronary artery disease. Significant cardiovascular sequelae have been reported in patients in whom risk factors were not readily identifiable. There is no experience in patients with recent cardiac arrhythmias

(especially tachycardias). Until further information is available, the use of IPTAM MIGRAINE RELIEF is not recommended in these patients.

A myocardial infarct has been reported in a 14 year old male following the use of oral sumatriptan; clinical signs occurred within 1 day of drug administration.

Following administration, IPTAM MIGRAINE RELIEF can be associated with transient symptoms, including chest pain and tightness, which may be intense and involve the throat. If symptoms consistent with ischaemic heart disease occur, appropriate investigations should be carried out and further doses should not be given until the results of these investigations are known. Patients should be advised to contact their doctor immediately if they experience symptoms consistent with ischaemic heart disease (see section 4.3 CONTRAINDICATIONS).

Cerebrovascular

Cerebral haemorrhage, subarachnoid haemorrhage, stroke, and other cerebrovascular events have been reported in patients treated with oral sumatriptan, and some have resulted in fatalities. The relationship of sumatriptan to these events is uncertain. In a number of cases, it appears possible that the cerebrovascular events were primary, sumatriptan having been administered in the incorrect belief that the symptoms experienced were a consequence of migraine when they were not.

Sumatriptan should not be administered if the headache being experienced is atypical of the patient. It should be noted that patients with migraine may be at increased risk of certain cerebrovascular events (eg. cerebrovascular accident, transient ischaemia attack).

Before treating headaches in patients not previously diagnosed as migraineurs, and in migraineurs who present with atypical symptoms, care should be taken to exclude other potentially serious neurological conditions.

IPTAM MIGRAINE RELIEF should be used with caution in patients with a history of seizures or other risk factors which lower the seizure threshold.

There is no experience in patients with recent cerebrovascular accidents. Until further information is available, the use of IPTAM MIGRAINE RELIEF is not recommended in these patients (see section 4.3 CONTRAINDICATIONS).

There is no information available on the use of IPTAM MIGRAINE RELIEF in the treatment of ophthalmoplegic migraine.

Other Vasospastic Events

Sumatriptan may cause vasospastic reactions other than coronary artery vasospasm. Both peripheral vascular ischaemia and colonic ischaemia with abdominal pain and bloody diarrhoea have been reported.

Use in elderly

Experience of the use of IPTAM MIGRAINE RELIEF in patients aged over 65 is limited. However, the pharmacokinetics do not differ significantly from a younger population. Until further clinical data are available, the use of IPTAM MIGRAINE RELIEF in patients aged over 65 is not recommended.

Paediatric use

The efficacy of oral sumatriptan has not been established in placebo-controlled trials carried out in 794 adolescent migraineurs. High placebo responses were found in these studies and there was a lack of statistically significant difference between placebo and oral doses ranging from 25 to 100 mg. The safety profile of oral sumatriptan is similar to that of adults. The safety and effectiveness of sumatriptan in children under the age of 12 years has not been established.

Use in hepatic impairment

IPTAM MIGRAINE RELIEF should be administered with caution to patients with diseases which may significantly affect the metabolism, absorption and excretion of the drug, such as impaired hepatic function. Studies have shown reduced sumatriptan clearance in patients with hepatic impairment. Lower doses should be considered in these patients. If appropriate, the first dose should be given under supervision to these patients.

Use in renal impairment

IPTAM MIGRAINE RELIEF should be administered with caution to patients with diseases which may significantly affect the metabolism, absorption and excretion of sumatriptan, such as impaired renal function.

Effects on Laboratory Tests

No data available.

4.5 INTERACTIONS WITH OTHER MEDICINES AND OTHER FORMS OF INTERACTIONS**Pharmacodynamic**

Prolonged vasospastic reactions have been reported with ergotamine. As these effects may be additive, concomitant use of ergotamine or ergotamine derivatives and IPTAM MIGRAINE RELIEF should be avoided. Twenty-four hours should elapse before IPTAM MIGRAINE RELIEF is taken following any ergotamine containing preparation. Conversely, ergotamine containing preparations should not be taken until 6 hours have elapsed following IPTAM MIGRAINE RELIEF administration (see section 4.3 CONTRAINDICATIONS).

Pharmacokinetic

An interaction may occur between sumatriptan and MAOIs and concomitant administration is contraindicated (see section 4.3 CONTRAINDICATIONS). Rarely an interaction may occur between sumatriptan and selective serotonin reuptake inhibitors. There have been rare post-marketing reports describing patients with serotonin syndrome (including altered mental status, autonomic instability, neuromuscular abnormalities, weakness, hyper-reflexia and incoordination) following the use of a SSRI. Serotonin syndrome has been reported following concomitant treatment with triptans and serotonin noradrenaline reuptake inhibitors (SNRIs).

If concomitant treatment with sumatriptan and an SSRI/SRNI is clinically warranted, appropriate observation of the patient is advised.

The concomitant administration of any triptan/5-HT₁ agonist with sumatriptan is not recommended.

There is no evidence of interactions with propranolol, flunarizine, pizotifen or alcohol.

Although there is no clear evidence, it is possible that an interaction may occur between serotonin 5-HT₁ agonists and the herbal remedy St John's Wort (*hypericum perforatum*), which may result in an increase in side effects.

Ophthalmic

Intermittent transient changes on the surface of the cornea have been observed in toxicology studies in dogs. No causative mechanism has been established for these changes but there is no evidence to suggest that this is relevant to clinical exposure.

4.6 FERTILITY, PREGNANCY AND LACTATION**Effects on Fertility**

No data available.

Use in Pregnancy- Pregnancy Category: B3

Drugs which have been taken by only a limited number of pregnant women and women of child bearing age without an increase in the frequency of malformation or other direct or indirect harmful effects on the human foetus have been observed. Studies in animals have shown evidence of an increased occurrence of fetal damage, the significance of which is considered uncertain in humans.

No obvious teratogenic effects have been seen in rats given oral doses of 500 mg/kg or in rabbits given oral doses up to 100 mg/kg during organogenesis (although it is noted that the number of pregnant rabbits investigated was limited).

Reproduction studies in rats have not revealed any clear evidence of impaired fertility (oral doses up to 500 mg/kg, given before and during mating) or of impaired post-natal pup development (oral doses up to 1000 mg/kg, given during the peri and post-natal period). In the rabbit embryotoxicity cannot be ruled out. After oral administration, at doses of 5, 25 and 100 mg/kg on days 8-20 of gestation (severe maternal toxicity at 100 mg/kg) there was evidence of a small, increasing dose-related trend in post-implantation intrauterine death.

Term foetuses from Dutch Stride rabbits treated during the period of organogenesis with oral sumatriptan exhibited an increased incidence of cervicothoracic vascular defects and skeletal abnormalities.

When administered to pregnant rabbits throughout the period of organogenesis sumatriptan has occasionally caused embryoletality at doses which were sufficiently high to produce maternal toxicity. Administration of this medicine should only be considered if the expected benefit to the mother is greater than any possible risk to the foetus.

Use in Lactation

Sumatriptan is excreted in breast milk in animals. In rats given oral sumatriptan at 1000 mg/kg during the lactation period, 3 dams out of 20 showed total litter loss whilst in another litter, only 9/15 survived to the end of nursing. Infant exposure can be minimised by avoiding breastfeeding for 24 hours after treatment. Caution should be exercised when considering the administration of sumatriptan to a breastfeeding woman.

4.7 EFFECTS ON ABILITY TO DRIVE AND USE MACHINES

No studies on the effects on the ability to drive and use machines have been performed. Drowsiness may occur as a result of migraine or its treatment with sumatriptan. This may influence the ability to drive and to operate machinery.

4.8 ADVERSE EFFECTS (UNDESIRABLE EFFECTS)

The most common side effects associated with treatment with Sumatriptan are: -

- Pain, sensations of tingling, heat or cold, heaviness, pressure or tightness. These are usually transient and may be intense and can affect any part of the body including the chest and throat.
- Flushing, dizziness and feelings of weakness. These are mostly mild to moderate in intensity and transient.
- Fatigue and drowsiness, sensory disturbance including paraesthesia and hypoesthesia have been reported.
- Nausea and vomiting occurred in some patients but the relationship to IPTAM MIGRAINE RELIEF is not clear.
- Transient increases in blood pressure arising soon after treatment has been recorded.
- Dyspnoea.

Serious coronary events have been reported (see section 4.4 SPECIAL WARNINGS AND PRECAUTIONS FOR USE). Other cardiovascular adverse reactions include hypotension, bradycardia, tachycardia and palpitations. Very rarely (less than 1 in 10,000) Raynaud's phenomenon, angina and ischaemic colitis have been reported.

There have been rare (less than 1 in 1,000) reports of seizures following migraine attacks treated with sumatriptan. Although some have occurred in patients with either a history of seizures or concurrent conditions predisposing to seizures, there are also reports in patients where no such predisposing factors are apparent.

Patients treated with sumatriptan very rarely (less than 1 in 10,000) exhibit visual disorders like flickering and diplopia. Additionally, cases of nystagmus, scotoma and reduced vision have been observed. Very rarely loss of vision has occurred, which is usually transient. However, visual disorders may also occur during a migraine attack itself.

Hypersensitivity reactions ranging from cutaneous hypersensitivity (e.g. rash, urticaria, pruritus or erythema) to, in rare cases (less than 1 in 10,000), anaphylaxis have been recorded (see section 4.4 SPECIAL WARNINGS AND PRECAUTIONS FOR USE).

Minor disturbances of liver function tests have occasionally been observed. There is no evidence that clinically significant abnormalities occurred more frequently than with placebo.

In the clinical trial programme, decreased lymphocyte count post treatment was observed in a number of patients receiving oral sumatriptan. This effect was not dose related and was also observed in patients receiving placebo. The significance of these findings is uncertain.

In the clinical trial programme, a similar profile of clinical adverse events was reported in the adolescent and adult populations taking sumatriptan tablets.

Post-Marketing Data

In addition to the drug-related adverse reactions reported from clinical trials, the following serious spontaneous events, reported to be possibly, probably or almost certainly caused following use of either subcutaneous, oral or intranasal sumatriptan in patients less than 18 years of age have been identified.

Cardiovascular: myocardial infarction.

Cerebrovascular: cerebellar infarction.

Neurology: seizures, tremor & dystonia.

Non-site specific: anaphylaxis.

Skin: urticaria, rash.

General disorders: “Pain trauma activated” and “Pain inflammation activated” – frequency not known

Table 1: Incidence of Treatment-Emergent* Adverse Events (%) Reported by at least 1% of Patients and all Cardiovascular Events Irrespective of Frequency in Controlled Clinical Trials with Sumatriptan Tablets

Event	Tablets (n=1456)	Placebo (n=296)
Atypical:		
tingling	1	<1
warm/hot sensation	1	<1

burning sensation	<1	0
numbness	2	1
feeling strange	0	0
cold sensation	1	<1
Gastrointestinal:		
nausea/vomiting	14	7
gastric symptoms, abdominal discomfort	3	3
dysphagia	1	0
Neurological:		
dizziness/vertigo	6	2
malaise/fatigue	9	3
drowsiness/sedation	3	1
paraesthesia	1	0
headache	1	1
syncope	1	0
Cardiovascular:		
flushing	<1	1
hypertension, tachycardia	<1	0
bradycardia	<1	0
palpitations	1	<1
hypotension	<1	0
pallor	<1	0
pulsating sensation	<1	0
changes in ECG	0	0
Symptoms Potentially of Cardiac Origin:		
neck pain/stiffness	3	0
feeling of heaviness	3	1
feeling of tightness	1	0
tight feeling in head	<1	0
pressure sensation	1	<1
chest symptoms (including chest pain)	3	<1
throat symptoms (including sore or swollen throat or throat spasms)	3	0
Musculoskeletal:		
Weakness	3	<1
Myalgia	2	<1
Ear, Nose and Throat:		
disturbance of nasal cavity/sinuses	<1	1
Miscellaneous:		

injection site reactions	NA	NA
Sweating	2	<1
disorder of mouth and tongue	2	<1
disturbance of taste	11	3
dyspnoea	1	0

* Includes all events regardless of causality that occurred at a frequency of = 1% in any sumatriptan treatment group and were more frequent in this group than in the placebo group.

NA = Not Applicable.

Reporting Suspected Adverse Effects

Reporting suspected adverse reactions after registration of the medicinal product is important. It allows continued monitoring of the benefit-risk balance of the medicinal product. Healthcare professionals are asked to report any suspected adverse reactions at www.tga.gov.au/reporting-problems.

4.9 OVERDOSE

Single doses up to 400 mg orally were not associated with side effects other than those mentioned. There is no experience of doses greater than these.

If overdosage with IPTAM MIGRAINE RELIEF occurs, the patient should be monitored for at least ten hours and standard supportive treatment applied as required.

It is unknown what effect haemodialysis or peritoneal dialysis has on the plasma concentrations of sumatriptan.

For information on the management of overdose, contact the Poisons Information Centre on 13 11 26 (Australia).

5 PHARMACOLOGICAL PROPERTIES

5.1 PHARMACODYNAMIC PROPERTIES

Mechanism of Action

Sumatriptan has been demonstrated to be a specific vascular 5-hydroxytryptamine-1 (5HT₁) receptor agonist with no effect at other 5HT receptor (5HT₂-5HT₇) subtypes. The vascular 5HT₁ receptor is found predominantly in cranial blood vessels and mediates vasoconstriction.

In animals, sumatriptan selectively constricts the carotid arterial circulation, but does not alter cerebral blood flow. The carotid arterial circulation supplies blood to the extracranial and intracranial tissues such as the meninges, and dilatation and/or oedema formation in these vessels is thought to be the underlying mechanism of migraine in man. In addition, experimental evidence suggests that sumatriptan inhibits trigeminal nerve activity. Both these actions may contribute to the anti-migraine action of sumatriptan in humans.

Clinical Trials

Clinical Studies Conducted in the Adult Population

The following table demonstrates 2 and 4 hours efficacy results in two placebo-controlled studies of sumatriptan tablets in 332 adult migraineurs experiencing moderate or severe pain.

Table 2: Efficacy Data for Placebo-controlled Studies of Sumatriptan tablets[‡]

	Study 1	Study 2
--	---------	---------

	Placebo (n=65)	Sumatriptan 50 mg (n=62)	Sumatriptan 100 mg (n=68)	Placebo (n=47)	Sumatriptan 50 mg (n=46)	Sumatriptan 100 mg (n=46)
Results at 2 hours						
Patients with pain relief [^]	26%	50%*	56%*	17%	54%*	57%*
Patients with no pain	8%	16%	23%*	6%	17%	24%*
Patients with meaningful relief [#]	34%	55%*	56%*	21%	54%*	57%*
Patients without nausea	57%	68%	65%	40%	61%	72%*
Patients without photophobia	22%	37%*	44%*	13%	26%	39%*
Patients with little or no clinical disability ^{##}	35%	60%*	59%*	28%	52%*	67%*
Results at 4 hours						
Patients with pain relief [^]	38%	68%*	71%*	19%	72%*	78%*
Patients with no pain	15%	32%*	52%*	11%	41%*	41%*
Patients with meaningful relief [#]	45%	71%*	79%*	26%	72%*	83%*
Patients without nausea	60%	79%*	83%*	45%	70%*	91%*
Patients without photophobia	40%	66%*	71%*	28%	65%*	65%*
Patients with little or no clinical disability ^{##}	40%	71%*	71%*	23%	70%*	83%*

[^] Pain relief defined as a reduction in headache severity from moderate or severe pain to mild or no pain.

[#] Meaningful relief is a patient assessment of when he/she felt onset of relief of headache pain.

^{##} A successful outcome in terms of clinical disability was defined prospectively as ability to work mildly impaired or ability to work and function normally.

* P<0.05 versus placebo.

[‡] Patients were administered either the 50 mg or 100 mg tablet according to the recommended dosing regimen (see section 4.2 DOSE AND METHOD OF ADMINISTRATION). The dose of the tablet was not titrated.

5.2 PHARMACOKINETIC PROPERTIES

In a pilot study no significant differences were found in the pharmacokinetic parameters between elderly and young healthy volunteers.

Absorption

After oral administration, sumatriptan is rapidly absorbed, 70% of maximum concentration occurring at 45 minutes. After a 100 mg dose the mean maximum plasma concentration is 54 ng/mL. Mean absolute oral bioavailability is 14% partly due to pre-systemic metabolism and partly due to incomplete absorption. Oral absorption of sumatriptan is not significantly affected by food.

Distribution

Plasma protein binding is low (14-21%); mean volume of distribution is 170 litres.

Population pharmacokinetic modelling indicated that clearance and volume of distribution both increase with body size in the adolescent population resulting in higher exposure in lower bodyweight

adolescents. The model predicted that a subject with a body weight of 40 kg would have an apparent clearance of 222 L/h and a volume of distribution of 850 L whilst the corresponding figures for a body weight of 66 kg would be 366 L/h and 1204 L. The predicted dependence of these parameters on body size should not pose any significant safety concern as the recommended initial dose range is 10-20 mg.

Metabolism & Excretion

Mean total plasma clearance is approximately 1160 mL/min and the mean renal plasma clearance is approximately 260 mL/min. Non-renal clearance accounts for about 80% of the total clearance. Sumatriptan is eliminated primarily by oxidative metabolism mediated by monoamine oxidase A. The major metabolite, the indole acetic acid analogue of sumatriptan, is mainly excreted in the urine, where it is present as a free acid and the glucuronide conjugate. It has no known 5HT₁ or 5HT₂ activity. Minor metabolites have not been identified. The pharmacokinetics of oral sumatriptan does not appear to be significantly affected by migraine attacks.

5.3 PRECLINICAL SAFETY DATA

Genotoxicity

No data available.

Carcinogenicity

No data available.

6 PHARMACEUTICAL PARTICULARS

6.1 LIST OF EXCIPIENTS

Excipients in IPTAM MIGRAINE RELIEF: lactose monohydrate, microcrystalline cellulose, croscarmellose sodium, magnesium stearate, Opadry II complete film coating system 40L14838 Pink.

6.2 INCOMPATIBILITIES

Incompatibilities were either not assessed or not identified as part of the registration of this medicine.

6.3 SHELF LIFE

In Australia, information on the shelf life can be found on the public summary of the Australian Register of Therapeutic Goods (ARTG). The expiry date can be found on the packaging.

6.4 SPECIAL PRECAUTIONS FOR STORAGE

Store below 25 °C.

6.5 NATURE AND CONTENTS OF CONTAINER

IPTAM MIGRAINE RELIEF is supplied in Aluminium/Aluminium blister packs containing 2 tablets.

Australian Register of Therapeutic Goods (ARTG)

AUST R 397730 – IPTAM MIGRAINE RELIEF sumatriptan 50 mg (as succinate) tablet blister pack

6.6 SPECIAL PRECAUTIONS FOR DISPOSAL

In Australia, any unused medicine or waste material should be disposed of by taking it to your local pharmacy.

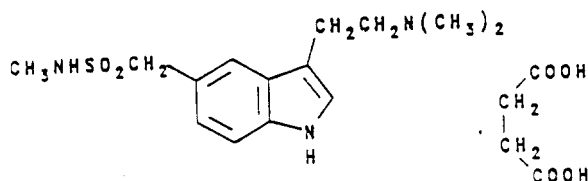
6.7 PHYSICOCHEMICAL PROPERTIES

Chemical Structure

Sumatriptan - Chemical name: 3-[2-(dimethylamino)ethyl]-N-methyl-1H-indole-5-methane sulphonamide. Molecular formula: C₁₄H₂₁N₃O₂S. MW: 295.4.

Sumatriptan succinate: Chemical name: 3-[2-(dimethylamino)ethyl]-N-methyl-1H-indole-5-methane sulphonamide, butane-1,4-dioate(1:1). Molecular formula: C₁₄H₂₁N₃O₂SC₄H₆O₄ MW: 413.5.

Structural formula :



Sumatriptan succinate is a white to off-white powder, with a melting point between 164.6°C-165.5°C, freely soluble in water, sparingly soluble in methanol and practically insoluble in methylene chloride.

CAS Number

103628-48-4

7 MEDICINE SCHEDULE (POISONS STANDARD)

Schedule 3 (Pharmacist Only Medicine)

8 SPONSOR

Alphapharm Pty Ltd trading as Viatris

Level 1, 30 The Bond

30-34 Hickson Road

Millers Point NSW 2000

www.viatris.com.au

Phone: 1800 274 276

9 DATE OF FIRST APPROVAL

13/10/2022

10 DATE OF REVISION

N/A

Summary Table of Changes

Section Changed	Summary of New Information
All	New product registration for IPTAM MIGRAINE RELIEF
4.8	General disorders – “Pain trauma activated” and “Pain inflammation activated” – frequency not known

IPTAM® is a Viatris company trade mark

IPTAM MIGRAINE RELIEF_pi\Oct22/01