

1 NAME OF THE MEDICINE

Meloxicam

2 QUALITATIVE AND QUANTITATIVE COMPOSITION

Each MOXICAM tablet consists of 7.5 mg or 15 mg of the active ingredient meloxicam.

Excipient with known effect: lactose.

For the full list of excipients, see Section 6.1 LIST OF EXCIPIENTS.

3 PHARMACEUTICAL FORM

MOXICAM meloxicam 7.5 mg tablets: Each tablet contains 7.5 mg of meloxicam as the active ingredient, presented as a yellow coloured, circular 7 mm, flat bevelled uncoated tablet, with central break line on one side, plain on the other.

MOXICAM meloxicam 15 mg tablets: Each tablet contains 15 mg of meloxicam as the active ingredient, presented as a pale yellow coloured, circular 10 mm, flat bevelled uncoated tablet, with central break line on one side, plain on the other.

4 CLINICAL PARTICULARS

4.1 THERAPEUTIC INDICATIONS

MOXICAM tablets are indicated for the symptomatic treatment of osteoarthritis and rheumatoid arthritis.

4.2 DOSE AND METHOD OF ADMINISTRATION

MOXICAM should be used at the lowest dose and for the shortest duration consistent with effective treatment.

The maximum recommended daily dose of MOXICAM is 15 mg. A dose of 15 mg/day should not be exceeded. As a dose for children has not been established, use should be restricted to adults (see Section 4.4 SPECIAL WARNINGS AND PRECAUTIONS FOR USE – Paediatric Use).

The dose of MOXICAM in patients with end-stage renal failure on haemodialysis should not exceed 7.5 mg/day (see Section 5.2 PHARMACOKINETIC PROPERTIES – Renal Impairment and Section 5.2 PHARMACOKINETIC PROPERTIES – Haemodialysis). No dose reduction is required in patients with mild or moderate renal impairment (i.e. in patients with a creatinine clearance of greater than 25 mL/min) nor in patients with mild to moderate hepatic impairment. In non-dialysed patients with severe renal impairment MOXICAM is contraindicated (see Section 4.3 CONTRAINDICATIONS).

In patients with increased risks of adverse reactions, e.g. a history of gastrointestinal disease or risk factors for cardiovascular disease, the treatment should be started at a dose of 7.5 mg/day and increased to 15 mg/day only if clinically justified.

Patients on long term treatment should be reviewed regularly with regards to efficacy, risk factors and ongoing need for treatment.

Osteoarthritis

The recommended dose of MOXICAM is 7.5 mg once daily, to be swallowed with fluid, in conjunction with food. Depending on the adequacy of response, the severity of the arthritic condition and the patient's concomitant diseases, the dose may be increased to 15 mg/day.

Patients should generally be maintained on the lowest dose consistent with achieving a satisfactory therapeutic response.

Rheumatoid Arthritis

The recommended dose of MOXICAM is 15 mg once daily, to be swallowed with fluid, in conjunction with food. Depending on the adequacy of response and the severity of the condition, the dose may be reduced to 7.5 mg/day.

Patients should generally be maintained on the lowest dose consistent with achieving a satisfactory therapeutic response.

Pregnancy

See Section 4.3 CONTRAINDICATIONS and Section 4.6 FERTILITY, PREGNANCY AND LACTATION.

4.3 CONTRAINDICATIONS

- Peri-operative treatment of pain in patients undergoing coronary artery bypass graft surgery (CABG)
- Known hypersensitivity to meloxicam or any excipients of the product. There is a potential for cross-sensitivity to aspirin and other NSAIDs
- Signs/symptoms of asthma, nasal polyps, angioedema or urticaria, following the administration of aspirin or other NSAIDs
- Active gastrointestinal ulceration/perforation
- Active Inflammatory Bowel Disease (Crohn's Disease or Ulcerative Colitis)
- Patients with severe hepatic impairment
- Non-dialysed severe renal insufficiency
- Severe uncontrolled heart failure
- Children and adolescents under 18 years of age
- Pregnancy
- Breastfeeding
- Concomitant administration of drugs known to inhibit CYP 2C9 (e.g. sulfaphenazole, sulfinpyrazone, sulfamethoxazole and fluconazole)
- The use of MOXICAM tablets is contraindicated in patients with rare hereditary galactose intolerance, due to the lactose content of the formulations

As with all NSAIDs, MOXICAM is contraindicated in patients with recent cerebrovascular bleeding or established systemic bleeding disorders.

4.4 SPECIAL WARNINGS AND PRECAUTIONS FOR USE

Gastrointestinal Effects

As with other NSAIDs, gastrointestinal (GI) bleeding, ulceration or perforation, potentially fatal, can occur at any time during treatment, with or without warning symptoms or a previous history of serious GI events. The consequences of such events are generally more serious in the elderly. Minor upper GI problems, such as dyspepsia, are common and may occur at any time during NSAID therapy. Therefore, doctors and patients should remain alert for ulceration and bleeding, even in the absence of previous GI tract symptoms. Patients should be informed about the signs and/or symptoms of serious GI toxicity and the steps to take if they occur. The utility of periodic laboratory monitoring has not been demonstrated, nor has it been adequately assessed. Only one in five patients who develop a serious upper GI adverse event on NSAID therapy is symptomatic. It has been demonstrated that upper GI ulcers, gross bleeding or perforation, caused by NSAIDs, appear to occur in approximately 1% of patients treated for three to six months, and in about 2 to 4% of patients treated for one year. These trends continue, increasing the likelihood of developing a serious adverse GI event at some time during the course of therapy. However, even short-term therapy is not without risk.

Studies have shown that patients with a prior history of ulcer disease and/or gastrointestinal bleeding and who use NSAIDs have a greater than 10-fold higher risk of developing a GI bleed than patients with neither of these factors.

Caution is advised in patients most at risk of developing a GI complication with NSAIDs: the elderly, patients using any other NSAID or aspirin concomitantly or patients with a prior history of or recent GI disease such as ulceration and GI bleeding.

NSAIDs should be prescribed with caution in patients with a prior history of or recent ulcer disease or GI bleeding.

For high risk patients, alternate therapies that do not involve NSAIDs should be considered.

In clinical trials, meloxicam has been shown to cause fewer GI adverse events (including dyspepsia, abdominal pain, nausea, vomiting, etc.) than other NSAIDs with which it has been compared (see Table 1).

Table 1: Incidence of GI Adverse Events (%) after 4 weeks, 12 weeks and 6 months

4-week Treatment			12-week Treatment				6-month Treatment			
MELISSA/SELECT			Placebo-controlled trial				Active-controlled trial			
melox. 7.5 mg	diclo. (SR) 100 mg	pirox. 20 mg	melox. 7.5 mg	melox. 15 mg	placebo	diclo. BID (2x 50 mg)	melox. 7.5 mg	melox. 15 mg	diclo. 100 mg	pirox. 20 mg
n = 8955	n = 4688	n = 4336	n = 154	n = 156	n = 157	n = 153	n = 169	n = 306	n = 167	n = 149
12%	19%	15%	20%	17%	17%	28%	27%	24%	28%	30%

KEY: melox. = meloxicam; pirox. = piroxicam; diclo. = diclofenac; SR = slow release; BID = twice daily

Caution should be exercised when treating patients with a history of upper gastrointestinal disease and in patients receiving treatment with anticoagulants. Patients with GI symptoms should be monitored. Meloxicam therapy should cease if peptic ulceration or GI ulceration or bleeding occurs.

Co-administration of meloxicam with drugs known to inhibit CYP 3A4 should be undertaken with caution. A combination of meloxicam and substances known to inhibit both CYP 3A4 and CYP 2C9 should be avoided because of the increased risk of toxicity.

Cardiovascular Effects

Long term therapy with some COX-2 selective NSAIDs of the coxib class has been shown to increase the risk of serious cardiovascular thrombotic events. Meloxicam is a COX-2 selective NSAID. Meloxicam has not been demonstrated to increase the risk of cardiovascular adverse events compared to nonselective NSAIDs in clinical trials. However, long term placebo-controlled data to adequately assess any cardiovascular risk are not available for Meloxicam.

All NSAIDs, both COX-2 selective and nonselective, may cause an increased risk of serious cardiovascular thrombotic events including myocardial infarction and stroke. This may increase with dose and duration of use. Patients with cardiovascular disease, history of atherosclerotic cardiovascular disease or risk factors for cardiovascular disease may be at greater risk. To minimise the potential risk of an adverse cardiovascular event in patients taking meloxicam especially in those with cardiovascular risk factors the lowest effective dose should be used for the shortest possible duration.

Physicians and patients should remain alert for such cardiovascular events even in the absence of previous cardiovascular symptoms. Patients should be informed about signs and/or symptoms of serious cardiovascular toxicity and the steps to take if they occur.

Skin Reactions

Serious skin reactions, some of them fatal, including exfoliative dermatitis, Stevens-Johnson syndrome and toxic epidermal necrolysis, and Drug Reaction with Eosinophilia with Systemic Symptoms (DRESS) (see subheading below) have been reported very rarely in association with the use of meloxicam. Patients appear to be at highest risk of these reactions early in the course of therapy, the onset of the reaction occurring in the majority of cases within the first month of treatment. Meloxicam should be discontinued at the first appearance of skin rash, mucosal lesions, or any other sign of hypersensitivity.

Drug Reaction with Eosinophilia with Systemic Symptoms (DRESS)

DRESS has been reported in patients taking NSAIDs. Some of these events have been fatal or life-threatening. DRESS typically, although not exclusively, presents with fever, rash, lymphadenopathy, and/or facial swelling. Other clinical manifestations may include hepatitis, nephritis, haematological abnormalities, myocarditis, or myositis. Sometimes symptoms of DRESS may resemble an acute viral infection. Eosinophilia is often present. Because this disorder is variable in its presentation, other organ systems not noted here may be involved. It is important to note that early manifestations of hypersensitivity, such as fever or lymphadenopathy, may be present even though rash is not evident. If such signs or symptoms are present, discontinue the NSAID and evaluate the patient immediately.

Combination Use of ACE Inhibitors or Angiotensin Receptor Antagonists, Anti-inflammatory Drugs and Thiazide Diuretics

The use of an ACE inhibiting drug (ACE-inhibitor or angiotensin receptor antagonist), an anti-inflammatory drug (NSAID or COX-2 inhibitor) and a thiazide diuretic at the same time increases the risk of renal impairment. This includes use in fixed-combination products containing more than one class of drug. Combined use of these medications should be accompanied by increased monitoring of serum creatinine, particularly at the institution of the combination. The combination of drugs from these three classes should be used with caution particularly in elderly patients or those with pre-existing renal impairment.

Fluid Retention and Oedema

Induction of sodium, potassium and water retention and interference with the natriuretic effects of diuretics may occur with NSAIDs. Cardiac failure or hypertension may be precipitated or exacerbated in susceptible patients as a result. For patients at risk, clinical monitoring is recommended.

Pre-existing Asthma

Patients with asthma may have aspirin-sensitive asthma. The use of aspirin in patients with aspirin-sensitive asthma has been associated with severe bronchospasm which can be fatal. Since cross-reactivity, including bronchospasm, between aspirin and other NSAIDs has been reported in such aspirin-sensitive patients, meloxicam should not be administered to patients with this form of aspirin sensitivity and should be used with caution in patients with pre-existing asthma.

Use in Patients Being Treated with Corticosteroids

Meloxicam cannot be expected to substitute for corticosteroids or to treat corticosteroid insufficiency. Abrupt discontinuation of corticosteroids may lead to disease exacerbation. Patients on prolonged corticosteroid therapy should have their therapy tapered slowly if a decision is made to discontinue corticosteroids.

Use in Patients with Fever and Infection

The pharmacological activity of meloxicam in reducing inflammation and possibly fever may diminish the utility of these diagnostic signs in detecting complications of presumed non-infectious, painful conditions.

Anaphylactoid Reactions

As with other NSAIDs, anaphylactoid reactions may occur in patients without known prior exposure to meloxicam. Meloxicam should not be given to patients with the aspirin triad. This symptom complex typically occurs in asthmatic patients who experience rhinitis with or without nasal polyps, or who exhibit severe, potentially fatal bronchospasm after taking aspirin or other NSAIDs. Emergency help should be sought in cases where an anaphylactoid reaction occurs.

Lactose Monohydrate

MOXICAM tablets 7.5 mg contain 43 mg lactose monohydrate and MOXICAM tablets 15 mg contain 86 mg lactose monohydrate per maximum recommended daily dose. Patients with rare hereditary problems of galactose intolerance, e.g. galactosaemia, should not take this medicine.

Use in Hepatic Impairment

Borderline elevations of one or more liver tests may occur in up to 15% of patients taking NSAIDs, including meloxicam. These laboratory values may progress, may remain unchanged, or may be transient with continuing therapy. Notable elevations of ALT or AST (approximately three or more times the upper limit of

normal) have been reported in approximately 1% of patients in clinical trials with NSAIDs. In addition, rare cases of severe hepatic reactions, including jaundice and fatal fulminant hepatitis, liver necrosis and hepatic failure, some of them with fatal outcomes, have been reported with NSAIDs.

Physicians and patients should remain alert for hepatotoxicity. Patients should be informed about the signs and/or symptoms of hepatotoxicity. Patients with signs and/or symptoms suggesting liver dysfunction (e.g., nausea, fatigue, lethargy, pruritus, jaundice, abdominal tenderness in the right upper quadrant and "flu-like" symptoms), or in whom an abnormal liver test has occurred, should be evaluated for evidence of the development of a more severe hepatic reaction while on therapy with meloxicam. If clinical signs and symptoms consistent with liver disease develop, or if systemic manifestations occur (e.g. eosinophilia, rash), meloxicam should be discontinued.

Use in Renal Impairment

NSAIDs inhibit the synthesis of renal prostaglandins, which play a supportive role in the maintenance of renal perfusion. In patients whose renal blood flow and blood volume are decreased, administration of an NSAID may precipitate overt renal decompensation which is typically followed by recovery to pre-treatment state upon discontinuation of nonsteroidal anti-inflammatory therapy.

Patients at greatest risk of such a reaction are elderly individuals, dehydrated patients, those with congestive heart failure, liver cirrhosis, nephrotic syndrome and overt renal disease, those receiving concomitant treatment with a diuretic, ACE inhibitor or angiotensin II receptor antagonist or those having undergone major surgical procedures which led to hypovolaemia. In such patients, the renal function, including volume of diuresis, should be carefully monitored at the beginning of therapy.

In rare cases, NSAIDs may cause interstitial nephritis, glomerulonephritis, renal medullary necrosis or nephrotic syndrome.

The dose of meloxicam in patients with end-stage renal failure on haemodialysis should not exceed 7.5 mg. No dose reduction is required in patients with mild or moderate renal impairment (i.e., in patients with a creatinine clearance of greater than 25 mL/min).

The extent to which metabolites of meloxicam may accumulate in patients with renal failure has not been studied. As some metabolites are excreted by the kidney, patients with significantly impaired renal function should be more closely monitored.

Use in the Elderly

Frail or debilitated patients may tolerate side effects less well and such patients should be carefully supervised. As with other NSAIDs, caution should be used in the treatment of elderly patients who are more likely to be suffering from impaired renal, hepatic, or cardiac function.

Paediatric Use

Meloxicam is not recommended for use in children and adolescents under 18 years of age (see Section 4.3 CONTRAINDICATIONS).

Effects on Laboratory Tests

No data available.

4.5 INTERACTIONS WITH OTHER MEDICINES AND OTHER FORMS OF INTERACTIONS

General

In vitro drug interaction studies revealed that the metabolism of meloxicam is predominantly mediated via the CYP 2C9 isoenzyme, with a minor contribution of the CYP 3A4 isoenzyme in the liver. Co-administration of meloxicam with drugs known to inhibit CYP 2C9 is contraindicated. Co-administration of meloxicam with drugs known to inhibit CYP 3A4 (ketoconazole, itraconazole, erythromycin) or drugs known to be metabolised by CYP 3A4 (terfenadine, astemizole, ciclosporin, class III antiarrhythmic drugs such as

amiodarone and quinidine) should be undertaken with caution (see Section 4.4 SPECIAL WARNINGS AND PRECAUTIONS FOR USE - Gastrointestinal Effects).

Antacids

No pharmacokinetic interaction was detected with concomitant administration of antacids.

Cimetidine

Concomitant administration of 200 mg cimetidine QID did not alter the single dose pharmacokinetics of 30 mg meloxicam.

Digoxin

Meloxicam 15 mg once daily for 7 days did not alter the plasma concentration profile of digoxin after beta-acetyldigoxin administration for 7 days at clinical doses. In vitro testing found no protein binding drug interaction between digoxin and meloxicam.

Furosemide (frusemide)

Clinical studies, as well as post-marketing observations, have shown that NSAIDs can reduce the natriuretic effect of furosemide (frusemide) and thiazide diuretics in some patients. This effect has been attributed to inhibition of renal prostaglandin synthesis. Studies with furosemide (frusemide) agents and meloxicam have not demonstrated a reduction in natriuretic effect. Furosemide (frusemide) single and multiple dose pharmacodynamics and pharmacokinetics are not affected by multiple doses of meloxicam. Nevertheless, during concomitant therapy with furosemide (frusemide) and meloxicam, patients should be observed closely for signs of declining renal function (see Section 4.5 INTERACTIONS WITH OTHER MEDICINES AND OTHER FORMS OF INTERACTIONS - Diuretics), as well as to assure diuretic efficacy.

Cytochrome P450 Inhibitors

Co-administration of meloxicam with drugs known to inhibit CYP 2C9 is contraindicated. Co-administration of meloxicam with drugs known to inhibit CYP 3A4 should be undertaken with caution (see Section 4.4 SPECIAL WARNINGS AND PRECAUTIONS FOR USE – Gastrointestinal Effects).

Other Prostaglandin Synthetase Inhibitors (PSIs) including glucocorticoids and salicylates (acetylsalicylic acid)

Co-administration of PSIs may increase the risk of gastrointestinal ulcers and bleeding, via a synergistic effect, and is not recommended. The concomitant use of meloxicam with other NSAIDs is not recommended.

Oral Anticoagulants, Antiplatelet Drugs, Systemically Administered Heparin, Thrombolytics and Selective Serotonin Reuptake Inhibitors (SSRIs)

There is an increased risk of bleeding via inhibition of platelet function, when NSAIDs are co-administered. If such co-prescribing cannot be avoided, close monitoring of their effects on coagulation is required.

Lithium

NSAIDs have been reported to increase lithium plasma levels (via decreased renal excretion of lithium), which may reach toxic values. The concomitant use of lithium and NSAIDs is not recommended. If this combination appears necessary, lithium plasma concentrations should be monitored carefully during the initiation, adjustment and withdrawal of meloxicam treatment.

Methotrexate

Meloxicam did not have a significant effect on the pharmacokinetics of single doses of methotrexate. In vitro, methotrexate did not displace meloxicam from human serum binding sites. However, as with other NSAIDs, meloxicam may increase the haematologic toxicity of methotrexate. In this situation, strict monitoring of blood cell count is recommended.

NSAIDs can reduce the tubular secretion of methotrexate thereby increasing the plasma concentrations of methotrexate. For this reason, for patients on high dosages of methotrexate (more than 15 mg/week) the concomitant use of NSAIDs is not recommended. The risk of an interaction between NSAIDs and methotrexate should be considered also in patients on low dosage of methotrexate, especially in patients with impaired renal function. In case combination treatment is necessary, blood cell count and renal function should

be monitored. Caution should be taken in case both NSAID and methotrexate are given within 3 days, in which case the plasma level of methotrexate may increase and cause increased toxicity. Although the pharmacokinetics of methotrexate (15 mg/week) were not affected by concomitant meloxicam treatment, it should be considered that the haematological toxicity of methotrexate can be amplified by treatment with NSAIDs.

Pemetrexed

For the concomitant use of meloxicam with pemetrexed in patients with creatinine clearance from 45 to 79 mL/min, the administration of meloxicam should be paused for 5 days before, on the day of, and 2 days following pemetrexed administration. If a combination of meloxicam with pemetrexed is necessary, patients should be closely monitored, especially for myelosuppression and gastro-intestinal adverse reactions. In patients with creatinine clearance below 45 mL/min the concomitant administration of meloxicam with pemetrexed is not recommended.

Contraception

NSAIDs have been reported to decrease the efficacy of intrauterine devices.

Diuretics

Treatment with NSAIDs is associated with the potential for acute renal insufficiency in patients who are dehydrated. Patients receiving meloxicam and diuretics should be adequately hydrated and be monitored for renal function prior to initiating treatment.

Ciclosporin

Nephrotoxicity of ciclosporin may be enhanced by NSAIDs via renal prostaglandin mediated effects. During combined treatment, renal function is to be measured.

Antihypertensives (beta-blockers, ACE inhibitors, vasodilators, diuretics)

A reduced effect of the antihypertensive drug by inhibition of vasodilating prostaglandins has been reported during treatment with NSAIDs.

Angiotensin-II Receptor Antagonists

NSAIDs and angiotensin-II receptor antagonists as well as ACE inhibitors exert a synergistic effect on the decrease of glomerular filtration. In patients with pre-existing renal impairment this may lead to acute renal failure.

Colestyramine

Colestyramine binds to meloxicam in the gastrointestinal tract leading to a faster elimination of meloxicam.

Oral Hypoglycaemics

Interactions via CYP 2C9 can be expected in combination with medicinal products such as oral anti-diabetics (sulfonylureas), which may lead to increased plasma levels of these drugs and meloxicam. Patients concomitantly using meloxicam with sulfonylureas should be carefully monitored for hypoglycaemia.

4.6 FERTILITY, PREGNANCY AND LACTATION

Effects on Fertility

Oral treatment with meloxicam at doses up to 5 mg/kg/day in female rats (approximately 2.7 times the human dose based on BSA) and up to 9 mg/kg/day (approximately 5 times the human dose based on BSA) in male rats did not affect mating behaviour or fertility.

Oral treatment of female rats with meloxicam at doses of 1 mg/kg/day (approximately half of the human dose based on BSA) reduced the number of embryonic implantations and increased the number of early resorptions. A no-effect dose for these effects was not established. A reduction in the number of corpora lutea was also observed at 5 mg/kg/day, with the no-effect dose being 2.5 mg/kg/day (approximately 1.5-fold greater than the human dose based on BSA).

The use of meloxicam, as with any drug known to inhibit cyclooxygenase/prostaglandin synthesis, may impair fertility and is not recommended in women attempting to conceive. Meloxicam may delay ovulation. Therefore, in women who have difficulties conceiving, or who are undergoing investigation of infertility, withdrawal of meloxicam should be considered.

Use in Pregnancy (Category C)

Meloxicam use is not recommended in pregnancy (see Section 4.3 CONTRAINDICATIONS).

Inhibition of prostaglandin-synthesis may adversely affect pregnancy and/or the embryofetal development. Data from epidemiological studies suggest an increased risk of miscarriage and of cardiac malformation and gastroschisis after the use of a prostaglandin synthesis inhibitor in early pregnancy.

The absolute risk of cardiovascular malformation was increased from less than 1% up to approximately 1.5%. The risk is believed to increase with dose and duration of therapy. In preclinical studies, administration of a prostaglandin synthesis inhibitor has been shown to result in increased pre- and post-implantation loss and embryofetal lethality. In addition, increased incidences of various malformations, including cardiovascular, have been reported in animals given a prostaglandin synthesis inhibitor during the organogenesis period.

From about 20 weeks of pregnancy all prostaglandin-synthesis inhibitors may expose the fetus to:

- Renal dysfunction, which may progress to renal failure with oligohydroamniosis (see Oligohydramnios and Neonatal Renal Impairment subheading below)

During the third trimester of pregnancy all prostaglandin-synthesis inhibitors may expose the fetus to:

- Cardiopulmonary toxicity (with premature close of the ductus arteriosus and pulmonary hypertension)

The mother and the neonate, at the end of pregnancy, to:

- Possible prolongation of bleeding time, an anti-aggregating effect which may occur even at very low doses
- Inhibition of uterine contractions resulting in delayed or prolonged labour

Meloxicam was not teratogenic in rats up to an oral dose of 4 mg/kg/day (approximately 2.2 times the human dose at 15 mg/day for a 50 kg adult based on body-surface-area (BSA)) when given during organogenesis. Meloxicam caused an increased incidence of septal defect of the heart, a rare event, at an oral dose of 60 mg/kg/day (about 60 times the human dose based on BSA) and embryolethality at oral doses \geq 5 mg/kg/day (5 times the human dose based on BSA) when rabbits were treated throughout organogenesis.

Studies in rats with meloxicam, as with other drugs known to inhibit prostaglandin synthesis, showed an increased incidence of still births, increased length of delivery time and delayed parturition at oral doses \geq 1 mg/kg/day (approximately 0.6 times the human dose based on BSA), and decreased pup survival at an oral dose of 4 mg/kg/day (approximately 2.1 times the human dose based on BSA) throughout organogenesis. Similar findings were observed in rats receiving oral doses \geq 0.125 mg/kg/day (less than 0.1 times the human dose based on BSA) during late gestation and the lactation period.

Meloxicam crosses the placental barrier. There are no adequate, well-controlled studies in pregnant women..

Oligohydramnios and Neonatal Renal Impairment

Use of NSAIDs from about 20 weeks gestation may cause fetal renal dysfunction leading to oligohydramnios and, in some cases, neonatal renal impairment.

These adverse outcomes are seen, on average, after days to weeks of treatment, although oligohydramnios has been infrequently reported as soon as 48 hours after NSAID initiation. Oligohydramnios is often, but not always, reversible with treatment discontinuation.

Complications of prolonged oligohydramnios may, for example, include limb contractures and delayed lung maturation. In some post-marketing cases of impaired neonatal renal function, invasive procedures such as exchange transfusion or dialysis were required.

Use in Lactation

Studies of meloxicam excretion in human milk have not been conducted. However, meloxicam was excreted in the milk of lactating rats at concentrations higher than those in plasma. The safety of meloxicam in humans during lactation has not been established and therefore, the drug should not be used during lactation.

4.7 EFFECTS ON ABILITY TO DRIVE AND USE MACHINES

There are no specific studies about effects on the ability to drive vehicles and to use machinery. Patients who experience visual disturbances, drowsiness or other central nervous system disturbances should refrain from these activities.

4.8 ADVERSE EFFECTS (UNDESIRABLE EFFECTS)

The meloxicam phase II/III safety database includes 10,122 osteoarthritis patients and 1,012 rheumatoid arthritis patients treated with meloxicam 7.5 mg/day and 3,505 osteoarthritis patients and 1,351 rheumatoid arthritis patients treated with meloxicam 15 mg/day. Meloxicam at these doses was administered to 661 patients for at least six months and to 312 patients for at least one year. Approximately 10,500 of these patients were treated in ten placebo- and/or active-controlled osteoarthritis trials and 2,362 of these patients were treated in ten placebo- and/or active-controlled rheumatoid arthritis trials. Gastrointestinal (GI) adverse events were the most frequently reported adverse events in all treatment groups across meloxicam trials.

A 12-week, multicentre, double-blind, randomised trial was conducted in patients with osteoarthritis of the knee or hip to compare the efficacy and safety of meloxicam with placebo and with an active control. Table 2 presents the adverse events that occurred in greater than or equal to 1% of the meloxicam treatment groups.

Table 2: Adverse Events (%) Occurring in \geq 1% of Meloxicam Patients in a 12-week Osteoarthritis Placebo- and Active-controlled Trial

	Placebo	Meloxicam 7.5 mg daily	Meloxicam 15 mg daily	Diclofenac 10 mg daily
No. of patients	157	154	156	153
Ear and labyrinth disorders				
Ear disorder	0	0	1.3	0.7
Vertigo	0	0.6	1.3	0.7
Eye disorders				
Cataract	0	0	1.3	1.3
Gastrointestinal				
Abdominal pain	2.5	1.9	2.6	1.3
Constipation	1.9	1.9	0.6	3.9
Diarrhoea	3.8	7.8	3.2	9.2
Dyspepsia	4.5	4.5	4.5	6.5
Eructation	0	0	1.3	0
Flatulence	4.5	3.2	3.2	3.9
Gastro-oesophageal reflux disease	0	0.6	1.9	1.3
Nausea	3.2	3.9	3.8	7.2
Vomiting	1.9	1.3	1.3	2.6
General disorders and administration site conditions				
Fatigue	1.9	1.9	1.3	1.3
Gravitational oedema	0.6	1.3	1.9	3.3
Influenza like illness	5.1	4.5	5.8	2.6
Oedema peripheral	1.3	0.6	3.2	0
Immune system disorders				
Hypersensitivity	1.9	1.9	0.6	1.3
Infections and infestations				
Pharyngitis	1.3	0.6	3.2	1.3
Sinusitis	5.1	1.3	1.9	5.9
Upper respiratory tract infection	1.9	3.2	1.9	5.9
Injury, poisoning and procedural complications				
Accident at home	1.9	4.5	3.2	2.6
Fall	0.6	2.6	0	1.3

Metabolism and nutrition disorders				
Dehydration	0	1.3	0	0
Increased appetite	0.6	0	1.3	0
Musculoskeletal and connective tissue disorders				
Arthralgia	1.9	1.9	1.3	1.3
Arthritis	0	0	1.9	0
Back pain	3.2	1.3	1.9	2.0
Bursitis	0.6	1.9	1.3	0
Muscle spasms	1.3	1.3	1.9	1.3
Myalgia	0	1.3	1.3	0
Pain in extremity	0	1.3	0.6	0.7
Nervous system disorders				
Carpal tunnel syndrome	0	1.3	0.6	1.3
Dizziness	3.2	2.6	3.8	2.0
Headache	10.2	7.8	8.3	5.9
Psychiatric disorders				
Insomnia	0.6	0	1.9	2.0
Renal and urinary disorders				
Haematuria	0.6	0	1.3	0.7
Respiratory, thoracic and mediastinal disorders				
Cough	0.6	1.3	0.6	1.3
Dyspnoea	0	0	1.3	0.7
Pleuritic pain	0	0	1.3	0
Skin and subcutaneous tissue disorders				
Hyperhidrosis	0	0	1.3	0
Pruritus	0.6	1.3	0.6	0
Purpura	1.3	1.9	0	0.7
Rash	1.9	1.9	0	0.7
Vascular disorders				
Hypertension	2.5	0.6	1.9	0

Adverse events that occurred in $\geq 1\%$ of the meloxicam treatment groups in two 12-week placebo-controlled rheumatoid arthritis trials are presented in Table 3.

Table 3: Adverse Events (%) Occurring in $\geq 1\%$ of Meloxicam Patients in Two 12-week Rheumatoid Arthritis Placebo-controlled Trials

	Placebo	Meloxicam 7.5 mg daily	Meloxicam 15 mg daily	Diclofenac 10 mg daily
No. of patients	470	482	478	182
Gastrointestinal				
Abdominal pain	0.6	3.1	2.3	4.4
Abdominal pain upper	0.9	1.9	1.0	0
Constipation	0.9	1.5	1.7	3.8
Diarrhoea	5.3	5.2	3.3	6.0
Dyspepsia	3.6	5.6	3.6	7.1
Flatulence	1.1	1.2	1.5	5.5
Nausea	2.6	3.3	3.8	7.7
Vomiting	2.3	0.8	1.3	1.1
General disorders and administration site conditions				
Influenza like illness	2.1	2.3	2.3	5.5
Immune system disorders				
Hypersensitivity	0.4	1.2	0.2	0
Infections and infestations				
Bronchitis	0.2	0.6	1.3	0.5
Nasopharyngitis	0.6	1.7	1.9	0
Pharyngitis	0.6	0.8	1.0	1.1
Rhinitis	0.4	0.6	1.0	1.1
Sinusitis	1.3	1.7	1.5	1.6
Upper respiratory tract infection	2.1	4.1	4.0	2.7
Urinary tract infection	1.3	1.2	1.3	1.6

Injury, poisoning and procedural complications				
Fall	0.2	0.6	1.0	0.5
Musculoskeletal and connective tissue disorders				
Arthralgia	1.9	1.0	1.7	2.2
Back pain	2.3	1.5	1.9	2.2
Myalgia	0.2	1.0	0.6	0.5
Rheumatoid arthritis	2.3	1.9	1.5	1.6
Nervous system disorders				
Dizziness	3.0	2.3	0.6	3.3
Headache	6.6	6.6	5.4	9.3
Psychiatric disorders				
Insomnia	0.6	1.0	0.6	1.1
Respiratory, thoracic and mediastinal disorders				
Cough	1.5	0.8	1.5	2.2
Skin and subcutaneous tissue disorders				
Pruritus	1.3	0.6	1.0	1.1
Purpura	0.2	0.2	1.0	0
Rash	1.7	1.0	2.3	3.8
Vascular disorders				
Hypertension	0.9	1.5	1.0	2.2

Higher doses of meloxicam (22.5 mg and greater) have been associated with an increased risk of serious GI events, therefore the daily dose of meloxicam should not exceed 15 mg.

The following is a list of adverse events occurring in < 1% of patients, which may be causally related to the administration of meloxicam. The information is based on clinical trials involving patients who have been treated with daily oral doses of 7.5 or 15 mg meloxicam tablets over a period of up to 18 months (mean duration of treatment 127 days).

Blood and lymphatic system disorders: Blood count abnormal (including differential white cell count), leukopenia, thrombocytopenia, anaemia.

Concomitant administration of a potentially myelotoxic drug, in particular methotrexate, appears to be a predisposing factor to the onset of a cytopenia.

Cardiac disorders: Palpitations.

Ear and labyrinth disorders: Tinnitus.

Gastro-intestinal disorders: Gastro-intestinal perforation, occult or macroscopic gastro-intestinal haemorrhage, gastroduodenal ulcer, colitis, oesophagitis, stomatitis.

Gastro-intestinal haemorrhage, ulceration or perforation may potentially be fatal.

Hepatobiliary disorders: Transitory abnormalities of liver function parameters (e.g. raised transaminases or bilirubin).

Nervous system disorders: Somnolence.

Renal and urinary disorders: Renal function test abnormal (increased serum creatinine and/or serum urea).

Respiratory, thoracic and mediastinal disorders: Onset of asthma attacks in individuals allergic to aspirin or other NSAIDs.

Skin and subcutaneous tissue disorders: Urticaria, photosensitivity reaction

Vascular disorders: Flushing.

Post-Market Adverse Drug Reactions

Additional reports of adverse events which may be causally associated to the administration of meloxicam during worldwide post-marketing experience are included below.

General disorders and administration site conditions: In rare cases, other drugs of this class are reported to cause meningitis.

Eye disorders: Visual disturbance including blurred vision, conjunctivitis

Gastrointestinal disorders: Gastritis

Hepatobiliary disorders: Hepatitis

Immune system disorders: Anaphylactic reaction, anaphylactoid reaction and other immediate hypersensitivity.

Psychiatric disorders: Confusional state, disorientation, mood altered

Renal and urinary disorders: Acute renal failure. The use of NSAIDs may be related to micturition disorders, including acute urinary retention.

Reproductive system and breast disorders: Infertility female, ovulation delayed.

Skin and subcutaneous tissue disorders: Toxic epidermal necrolysis, Stevens-Johnson syndrome, angioedema, dermatitis bullous, erythema multiforme.

Other Adverse Events

Additional adverse events, reported from clinical trials or from spontaneous reports, where evidence for a causal association with meloxicam use is unclear, are the following: cardiac failure, angina, myocardial infarction, arrhythmia, vasculitis, agranulocytosis, interstitial nephritis, convulsion, liver failure.

The following serious undesirable effects have been reported in association with the use of NSAIDs and cannot be ruled out for meloxicam. These include oligohydramnios and neonatal renal impairment.

Reporting Suspected Adverse Effects

Reporting suspected adverse reactions after registration of the medicinal product is important. It allows continued monitoring of the benefit-risk balance of the medicinal product. Healthcare professionals are asked to report any suspected adverse reactions at www.tga.gov.au/reporting-problems.

4.9 OVERDOSE

For information on the management of overdose, contact the Poisons Information Centre on 13 11 26 (Australia).

Patients should be managed with symptomatic and supportive care following an NSAID overdose. In cases of acute overdose, activated charcoal is recommended. Administration of activated charcoal is recommended for patients who present 1 – 2 hours after overdose. For substantial overdose or severely symptomatic patients, activated charcoal may be administered repeatedly.

It has been shown in a clinical trial that colestyramine accelerates the elimination of meloxicam.

The typical signs and symptoms of NSAID overdose include nausea, vomiting, headache, drowsiness, blurred vision and dizziness. Rare cases of seizures, hypotension, apnoea, coma and renal failure have been reported with severe NSAID overdose.

5 PHARMACOLOGICAL PROPERTIES

5.1 PHARMACODYNAMIC PROPERTIES

Mechanism of Action

Meloxicam is a non-steroidal anti-inflammatory drug (NSAID) of the enolic acid class, which has shown anti-inflammatory, analgesic and antipyretic properties in animals. Meloxicam showed anti-inflammatory activity in all standard models of inflammation. A common mechanism for the above effects may exist in the ability of meloxicam to inhibit the biosynthesis of prostaglandins, known mediators of inflammation, by inhibition of cyclooxygenase (COX).

Comparison of the ulcerogenic dose and the anti-inflammatory effective dose in rat adjuvant arthritis model confirmed a greater therapeutic margin in animals over other NSAIDs (piroxicam, diclofenac, naproxen, flurbiprofen). In rats, meloxicam showed greater inhibitory effect on prostaglandin biosynthesis at the site of inflammation than in the gastric mucosa or the kidney.

Selective inhibition of the cyclooxygenase-2 (COX-2) isoenzyme, relative to COX-1, by meloxicam has been demonstrated in vitro on various cell systems: guinea pig macrophages, bovine aortic endothelial cells (for testing of COX-1 activity), mouse macrophages (for testing for COX-2 activity) and human recombinant enzymes expressed in cos-cells and in human whole blood.

Clinical Trials

The efficacy of meloxicam in treating the symptoms of osteoarthritis and rheumatoid arthritis has been confirmed in several clinical trials.

Osteoarthritis Trials

Two clinical studies of six months duration were performed in patients with osteoarthritis of the hip or knee. In the first study, the efficacy of meloxicam 15 mg (n = 306) and piroxicam 20 mg (n = 149) were found to be comparable, using as efficacy endpoints improvement in overall pain, pain on movement, global efficacy, change in duration of inactivity and change in quality of life score. In the second study, the efficacy of meloxicam 7.5 mg (n = 169) was found to be comparable to that of diclofenac 100 mg SR (n = 167) using similar endpoints.

Once daily dosing of meloxicam 7.5 mg (n = 153) and 15 mg (n = 156) showed a consistently more efficacious response than placebo (n = 155) in a 12-week trial in patients with osteoarthritis of the knee or hip. Efficacy was measured by global assessment of disease activity, global assessment of pain and arthritic condition, as measured by the WOMAC (Western Ontario and McMaster University) Osteoarthritis Index. Both doses of meloxicam were also shown to be comparable to diclofenac 50 mg twice daily (bid) (n = 152) with regard to efficacy, with a lower incidence of gastrointestinal (GI) adverse events when compared to diclofenac.

Two large scale, randomised, active-controlled clinical studies of four weeks duration were conducted in patients with osteoarthritis of the hand, hip, knee or spine. In the first study (MELISSA), the effects of meloxicam 7.5 mg (n = 4,635) were compared against the effects of diclofenac 100 mg SR (n = 4,688). In the second study (SELECT), the effects of meloxicam 7.5 mg (n = 4,320) were compared against the effects of piroxicam 20 mg (n = 4,336). The results from both studies indicated that meloxicam 7.5 mg was as efficacious as diclofenac 100 mg SR and piroxicam 20 mg in the treatment of symptomatic osteoarthritis.

Rheumatoid Arthritis Trials

The use of meloxicam for the symptomatic treatment of rheumatoid arthritis was evaluated in a double-blind controlled trial involving 894 patients treated for 12 weeks. Meloxicam (7.5 mg, 15 mg and 22.5 mg daily) was compared to placebo, with diclofenac (75 mg twice daily) compared to placebo to establish trial sensitivity. The primary endpoints were number of painful or tender joints; number of swollen joints; investigator's global assessment of disease activity; patient's global assessment of disease activity and patient's assessment of pain. For all five primary endpoints, the meloxicam 7.5 mg group was significantly better than placebo for both mean on trial and last observation. The meloxicam 15 mg group was significantly better for three of five primary endpoints, excluding painful and swollen joints. In patients who had flared at baseline

tender joints, the meloxicam 15 mg group differed almost significantly from the placebo group ($p < 0.05$ not met due to the lower number of patients).

A second trial also investigated the use of meloxicam for the symptomatic treatment of rheumatoid arthritis. This double-blind placebo-controlled trial used three doses of meloxicam (7.5 mg, 15 mg and 22.5 mg daily), in patients with rheumatoid arthritis over a 12-week period. A total of 898 patients were treated with meloxicam. The primary endpoint in this study was the American College of Rheumatology (20%) response criterion (ACR20) response rate, a composite measure of clinical, laboratory and functional measures of rheumatoid arthritis response. For this parameter, all three doses of meloxicam were more effective than placebo for the duration of the study. For the endpoints that comprised the ACR20 criteria, each of the meloxicam groups was superior to placebo at all visits except for C-reactive protein. Efficacy reached a plateau at the meloxicam 15 mg dose (see Table 4). The overall incidence and severity of adverse events was similar among all three meloxicam groups.

Table 4: Analysis of ACR 20 Response Rate for Evaluable Patients at 12-weeks

Study Phase	Treatment	Total	Responder ^{1*} N (%)	p-value [#]		
				Placebo	Meloxicam 7.5 mg	Meloxicam 15 mg
Week 12	Placebo	292	97 (33.2)			
	Meloxicam 7.5 mg	306	138 (45.1)	0.0008		
	Meloxicam 15 mg	293	158 (53.9)	0.0000	0.0439	

¹ The primary efficacy end-point was the ACR 20. A responder was a patient with a response defined as: $\geq 20\%$ improvement in both tender joint count and swollen joint count and at least three of the following: $\geq 20\%$ improvement in: patient pain assessment; patient global (overall) assessment; physician global (overall) assessment; the modified health assessment questionnaire; C-reactive protein.

* Early terminations were considered as non-responders from the termination date.

[#] Obtained from Cochran-Mantel-Haenszel test stratified by centre.

The data from both studies indicate that meloxicam is effective and safe for the treatment of patients with rheumatoid arthritis.

5.2 PHARMACOKINETIC PROPERTIES

Absorption

Meloxicam is well absorbed from the gastrointestinal tract following oral administration (absolute bioavailability: 89%). Once daily dosing leads to mean drug plasma concentrations with a relatively narrow $C_{maxss} - C_{minss}$ window in the range of 0.3 to 1.0 $\mu\text{g/mL}$ for 7.5 mg doses or 0.7 to 1.9 $\mu\text{g/mL}$ for 15 mg doses. However, values outside of this range have been encountered (C_{min} and C_{max} at steady-state respectively). The absorption is not altered by concomitant food intake. Maximum plasma concentrations were regularly achieved between 5 to 6 hours following tablet administration, irrespective of concomitant food consumption. Drug concentrations are dose-proportional for oral 7.5 mg and 15 mg doses, respectively. Steady-state conditions are achieved in 3 to 5 days.

Distribution

Volume of distribution is low (on average, 16 L). The volume of distribution following administration of multiple oral doses of meloxicam (7.5 to 15 mg) ranged from 10.1 L to 17.0 L (%CV 24.6% to 39.9%). In plasma, more than 99% is bound to plasma proteins. Meloxicam penetrates well into synovial fluid to give concentrations approximately half those in plasma.

Metabolism

Meloxicam is eliminated almost entirely by hepatic metabolism: two thirds by cytochrome (CYP) P450 enzymes (CYP 2C9 two thirds and CYP 3A4 one third) and one third by other pathways, such as peroxidase oxidation. Meloxicam is almost completely metabolised to four pharmacologically inactive metabolites. The major metabolite, 5'-carboxymeloxicam (60% of dose), from CYP 2C9 mediated metabolism, is formed by oxidation of an intermediate metabolite 5'-hydroxymethylmeloxicam, which is also excreted to a lesser extent (9% of dose). *In vitro* studies suggest that CYP 2C9 plays an important role in this metabolic pathway, with a minor contribution from the CYP 3A4 isoenzyme. The patient's peroxidase activity is probably responsible for the other two metabolites which account for 16% and 4% of the administered dose respectively.

Excretion

Meloxicam excretion is predominantly in the form of metabolites and occurs to equal extents in the faeces and urine. Only traces of the unchanged parent compound are excreted in the urine (0.2%) and faeces (1.6%). The extent of the urinary excretion was confirmed for unlabelled multiple 7.5 mg doses: 0.5%, 6% and 13% of the dose were found in urine in the form of meloxicam, and the 5'-hydroxymethyl and 5'-carboxy metabolites, respectively.

There is significant biliary and/or enteral secretion of the drug. This was demonstrated when oral administration of colestyramine following a single IV dose of meloxicam decreased the AUC of meloxicam by 50%. Meloxicam is eliminated from the body with a mean elimination half-life of 20 hours. Total plasma clearance ranged from 7 to 9 mL/min following multiple oral doses of meloxicam.

Hepatic Impairment

Following a single 15 mg dose of meloxicam, there was no marked difference in plasma concentrations in subjects with mild (Child-Pugh Class I) and moderate (Child-Pugh Class II) hepatic impairment compared to healthy volunteers. Protein binding of meloxicam was not affected by hepatic insufficiency. Patients with severe hepatic impairment (Child-Pugh Class III) have not been adequately studied.

Renal Impairment

Meloxicam pharmacokinetics has been investigated in subjects with different degrees of renal insufficiency. Mild renal insufficiency does not have any substantial effect on meloxicam pharmacokinetics. Total drug plasma concentrations decreased with the degree of renal impairment, while free AUC values were similar. Total clearance of meloxicam increased in these patients, probably due to the increase in free fraction, leading to an increased metabolic clearance. Subjects with moderate renal impairment had higher total drug clearance. (Total clearance – no impairment: mean 4.80 mL/min (%CV 34.3%), median 4.44 mL/min; moderate impairment: mean 8.02 mL/min (%CV 46.2%), median 6.94 mL/min).

There is no need for dose adjustment in patients with mild to moderate renal failure (creatinine clearance greater than 25 mL/min). Patients with severe renal insufficiency have not been adequately studied. The use of meloxicam in patients with severe renal impairment is not recommended (see Section 4.3 CONTRAINDICATIONS and Section 4.4 SPECIAL WARNINGS AND PRECAUTIONS FOR USE). A reduced protein binding was observed in patients with end stage renal disease on haemodialysis (see Section 4.2 DOSE AND METHOD OF ADMINISTRATION).

Haemodialysis

Following a single dose of meloxicam, the free C_{\max} plasma concentrations were higher in patients with renal failure on chronic haemodialysis (1% free fraction) in comparison to healthy volunteers (0.3% free fraction). Haemodialysis did not lower the total drug concentration in plasma; therefore, additional doses are not necessary after haemodialysis. Meloxicam is not dialysable.

Elderly

Clearance is decreased in the elderly. In clinical studies, steady state pharmacokinetics in the elderly (mean age 67) did not differ significantly from those in a younger population (mean age 50), however elderly females had a higher systemic exposure to meloxicam than did elderly males.

Gender

Young females exhibited slightly lower plasma concentrations relative to young males. After single doses of 7.5 mg meloxicam, the mean elimination half-life was 19.5 hours for the female group as compared to 23.4 hours for the male group. At steady state, the data were similar (17.9 hours vs. 21.4 hours). This pharmacokinetic difference due to gender is likely to be of little clinical importance. There was linearity of pharmacokinetics and no appreciable difference in the C_{\max} or t_{\max} across genders.

5.3 PRECLINICAL SAFETY DATA

Genotoxicity

Meloxicam did not demonstrate genotoxic potential in assays for gene mutation *in vitro* and chromosomal damage *in vitro* and *in vivo*.

Carcinogenicity

Two-year dietary studies showed no evidence for carcinogenic activity at meloxicam doses up to 0.8 mg/kg/day (approximately half of the highest human dose at 15 mg/day for a 50 kg person based on body-surface-area [BSA]) in rats and up to 8 mg/kg/day (2.2 times the highest human dose based on BSA) in mice. In rats, the highest dose used was nephrotoxic, while the highest dose used in mice was subtoxic.

6 PHARMACEUTICAL PARTICULARS

6.1 LIST OF EXCIPIENTS

Pregelatinised maize starch, microcrystalline cellulose, lactose monohydrate, maize starch, sodium citrate dihydrate, colloidal anhydrous silica and magnesium stearate.

6.2 INCOMPATIBILITIES

Incompatibilities were either not assessed or not identified as part of the registration of this medicine.

6.3 SHELF LIFE

In Australia, information on the shelf life can be found on the public summary of the Australian Register of Therapeutic Goods (ARTG). The expiry date can be found on the packaging.

6.4 SPECIAL PRECAUTIONS FOR STORAGE

MOXICAM meloxicam 7.5 mg tablets: Store below 25°C.

MOXICAM meloxicam 15 mg tablets: Store below 25°C.

6.5 NATURE AND CONTENTS OF CONTAINER

MOXICAM meloxicam 7.5 mg tablets: PVC/PVDC/Al blister packs of 10 and 30 tablets.

MOXICAM meloxicam 15 mg tablets: PVC/PVDC/Al blister packs of 10 and 30 tablets.

Some strengths, pack sizes and/or pack types may not be marketed.

Australian Register of Therapeutic Goods (ARTG)

AUST R 126214 – MOXICAM meloxicam 7.5 mg tablet blister pack

AUST R 126215 – MOXICAM meloxicam 15 mg tablet blister pack

6.6 SPECIAL PRECAUTIONS FOR DISPOSAL

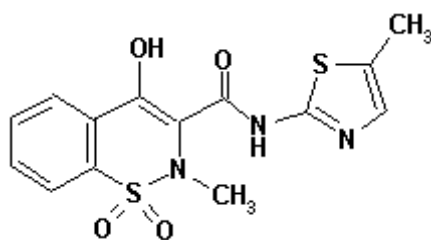
In Australia, any unused medicine or waste material should be disposed of by taking it to your local pharmacy.

6.7 PHYSICOCHEMICAL PROPERTIES

Chemical Structure

Chemical name : 4-hydroxy-2-methyl-N-(5-methyl-2-thiazolyl)-2H-1,2-benzothiazine-3-carboxamide-1,1-dioxide

Structural formula :

Molecular formula : C₁₄H₁₃N₃O₄S₂

Molecular weight : 351.4

Meloxicam is a pastel yellow solid with pKa values of 1.09 and 4.18 and a melting point of about 256°C. The substance is practically insoluble in water, soluble in dimethylformamide, slightly soluble in chloroform and acetone, and very slightly soluble in methanol. There are no chiral centres and no polymorphs are formed under normal conditions.

CAS Number

71125-38-7

7 MEDICINE SCHEDULE (POISONS STANDARD)

S4 (Prescription Only Medicine)

8 SPONSOR

Alphapharm Pty Ltd trading as Viatris

Level 1, 30 The Bond

30-34 Hickson Road

Millers Point NSW 2000

www.viatris.com.au

Phone: 1800 274 276

9 DATE OF FIRST APPROVAL

11/05/2007

10 DATE OF REVISION

13/01/2022

Summary Table of Changes

Section Changed	Summary of New Information
4.3	Addition of pregnancy contraindication
4.4	Addition of DRESS warning
4.6	Update to use in pregnancy information
4.6, 4.8	Addition of oligohydramnios and neonatal renal impairment precaution
8	Update to sponsor details
2, 4.2, 4.5, 5.1, 6.5	Editorial Changes